
**Information technology — UPnP
Device Architecture —**

**Part 30-2:
IoT management and control device
control protocol — IoT management
and control device**

Technologies de l'information — Architecture de dispositif UPnP —

*Partie 30-2: Protocole de contrôle de dispositif de gestion et de
contrôle de l'Internet des objets — Dispositif de gestion et de contrôle
de l'Internet des objets*





COPYRIGHT PROTECTED DOCUMENT

© ISO/IEC 2017, Published in Switzerland

All rights reserved. Unless otherwise specified, no part of this publication may be reproduced or utilized otherwise in any form or by any means, electronic or mechanical, including photocopying, or posting on the internet or an intranet, without prior written permission. Permission can be requested from either ISO at the address below or ISO's member body in the country of the requester.

ISO copyright office
Ch. de Blandonnet 8 • CP 401
CH-1214 Vernier, Geneva, Switzerland
Tel. +41 22 749 01 11
Fax +41 22 749 09 47
copyright@iso.org
www.iso.org

CONTENTS

1	Scope.....	1
2	Normative References	1
3	Terms, Definitions and Abbreviations	2
4	Notations and conventions	2
4.1	Notation	2
4.2	Data Types	2
4.3	Vendor-defined Extensions	3
5	Device Definitions	3
5.1	Device Type	3
5.2	Device Model.....	3
5.2.1	Description of Device Requirements	4
5.2.2	Relationships Between Services	4
6	XML Device Description.....	4
	Annex A - Theory of Operation (informative)	6
A.1	Introduction	6
A.2	Device Discovery	6
A.3	Sensor Discovery, Configuration and Status Reading	6
A.4	Reading and Writing of Data	6
A.5	Connecting Sensors to Transport Clients.....	7
	Figure 1 — IOT Management and Control Device Functional Diagram.....	1
	Figure A.1 —Simple Read and Write Flow Diagram.	7
	Figure A.2 — Connecting a IoT Management and Control Device to an External Storage.	8
	Table 1 — Device Requirements	3

Foreword

ISO (the International Organization for Standardization) and IEC (the International Electrotechnical Commission) form the specialized system for worldwide standardization. National bodies that are members of ISO or IEC participate in the development of International Standards through technical committees established by the respective organization to deal with particular fields of technical activity. ISO and IEC technical committees collaborate in fields of mutual interest. Other international organizations, governmental and non-governmental, in liaison with ISO and IEC, also take part in the work. In the field of information technology, ISO and IEC have established a joint technical committee, ISO/IEC JTC 1.

The procedures used to develop this document and those intended for its further maintenance are described in the ISO/IEC Directives, Part 1. In particular the different approval criteria needed for the different types of document should be noted. This document was drafted in accordance with the editorial rules of the ISO/IEC Directives, Part 2 (see <http://www.iso.org/directives>).

Attention is drawn to the possibility that some of the elements of this document may be the subject of patent rights. ISO and IEC shall not be held responsible for identifying any or all such patent rights. Details of any patent rights identified during the development of the document will be in the Introduction and/or on the ISO list of patent declarations received (see www.iso.org/patents).

Any trade name used in this document is information given for the convenience of users and does not constitute an endorsement.

For an explanation on the voluntary nature of Standards, the meaning of the ISO specific terms and expressions related to conformity assessment, as well as information about ISO's adherence to the WTO principles in the Technical Barriers to Trade (TBT) see the following URL: [Foreword – Supplementary information](#).

ISO/IEC 29341-30-2 was prepared by UPnP Forum and adopted, under the PAS procedure, by joint technical committee ISO/IEC JTC 1, *Information technology*, in parallel with its approval by national bodies of ISO and IEC.

The list of all currently available parts of ISO/IEC 29341 series, under the general title *Information technology — UPnP Device Architecture*, can be found on the [ISO web site](#).

Introduction

ISO and IEC draw attention to the fact that it is claimed that compliance with this document may involve the use of patents as indicated below.

ISO and IEC take no position concerning the evidence, validity and scope of these patent rights. The holders of -these patent rights have assured ISO and IEC that they are willing to negotiate licenses under reasonable and non-discriminatory terms and conditions with applicants throughout the world. In this respect, the statements of the holders of these patent rights are registered with ISO and IEC.

Intel Corporation has informed IEC and ISO that it has patent applications or granted patents.

Information may be obtained from:

Intel Corporation
Standards Licensing Department
5200 NE Elam Young Parkway
MS: JFS-98
USA – Hillsboro, Oregon 97124

Microsoft Corporation has informed IEC and ISO that it has patent applications or granted patents as listed below:

6101499 / US; 6687755 / US; 6910068 / US; 7130895 / US; 6725281 / US; 7089307 / US;
7069312 / US; 10/783 524 /US

Information may be obtained from:

Microsoft Corporation
One Microsoft Way
USA – Redmond WA 98052

Philips International B.V. has informed IEC and ISO that it has patent applications or granted patents.

Information may be obtained from:

Philips International B.V. – IP&S
High Tech campus, building 44 3A21
NL – 5656 Eindhoven

NXP B.V. (NL) has informed IEC and ISO that it has patent applications or granted patents.

Information may be obtained from:

NXP B.V. (NL)
High Tech campus 60
NL – 5656 AG Eindhoven

Matsushita Electric Industrial Co. Ltd. has informed IEC and ISO that it has patent applications or granted patents.

Information may be obtained from:

Matsushita Electric Industrial Co. Ltd.
1-3-7 Shiromi, Chuoh-ku
JP – Osaka 540-6139

Hewlett Packard Company has informed IEC and ISO that it has patent applications or granted patents as listed below:

5 956 487 / US; 6 170 007 / US; 6 139 177 / US; 6 529 936 / US; 6 470 339 / US; 6 571 388 / US; 6 205 466 / US

ISO/IEC 29341-30-2:2017(E)

Information may be obtained from:

Hewlett Packard Company
1501 Page Mill Road
USA – Palo Alto, CA 94304

Samsung Electronics Co. Ltd. has informed IEC and ISO that it has patent applications or granted patents.

Information may be obtained from:

Digital Media Business, Samsung Electronics Co. Ltd.
416 Maetan-3 Dong, Yeongtang-Gu,
KR – Suwon City 443-742

Huawei Technologies Co., Ltd. has informed IEC and ISO that it has patent applications or granted patents.

Information may be obtained from:

Huawei Technologies Co., Ltd.
Administration Building, Bantian Longgang District
Shenzhen – China 518129

Qualcomm Incorporated has informed IEC and ISO that it has patent applications or granted patents.

Information may be obtained from:

Qualcomm Incorporated
5775 Morehouse Drive
San Diego, CA – USA 92121

Telecom Italia S.p.A. has informed IEC and ISO that it has patent applications or granted patents.

Information may be obtained from:

Telecom Italia S.p.A.
Via Reiss Romoli, 274
Turin - Italy 10148

Cisco Systems informed IEC and ISO that it has patent applications or granted patents.

Information may be obtained from:

Cisco Systems, Inc.
170 West Tasman Drive
San Jose, CA – USA 95134

Attention is drawn to the possibility that some of the elements of this document may be the subject of patent rights other than those identified above. ISO and IEC shall not be held responsible for identifying any or all such patent rights.

Original UPnP Document

Reference may be made in this document to original UPnP documents. These references are retained in order to maintain consistency between the specifications as published by ISO/IEC and by UPnP Implementers Corporation and later by UPnP Forum. The following table indicates the original UPnP document titles and the corresponding part of ISO/IEC 29341:

UPnP Document Title	ISO/IEC 29341 Part
UPnP Device Architecture 1.0	ISO/IEC 29341-1:2008
UPnP Device Architecture Version 1.0	ISO/IEC 29341-1:2011
UPnP Device Architecture 1.1	ISO/IEC 29341-1-1:2011
UPnP Device Architecture 2.0	ISO/IEC 29341-1-2
UPnP Basic:1 Device	ISO/IEC 29341-2
UPnP AV Architecture:1	ISO/IEC 29341-3-1:2008
UPnP AV Architecture:1	ISO/IEC 29341-3-1:2011
UPnP AVTransport:1 Service	ISO/IEC 29341-3-10
UPnP ConnectionManager:1 Service	ISO/IEC 29341-3-11
UPnP ContentDirectory:1 Service	ISO/IEC 29341-3-12
UPnP RenderingControl:1 Service	ISO/IEC 29341-3-13
UPnP MediaRenderer:1 Device	ISO/IEC 29341-3-2
UPnP MediaRenderer:2 Device	ISO/IEC 29341-3-2:2011
UPnP MediaServer:1 Device	ISO/IEC 29341-3-3
UPnP AVTransport:2 Service	ISO/IEC 29341-4-10:2008
UPnP AVTransport:2 Service	ISO/IEC 29341-4-10:2011
UPnP ConnectionManager:2 Service	ISO/IEC 29341-4-11:2008
UPnP ConnectionManager:2 Service	ISO/IEC 29341-4-11:2011
UPnP ContentDirectory:2 Service	ISO/IEC 29341-4-12
UPnP RenderingControl:2 Service	ISO/IEC 29341-4-13:2008
UPnP RenderingControl:2 Service	ISO/IEC 29341-4-13:2011
UPnP ScheduledRecording:1	ISO/IEC 29341-4-14
UPnP ScheduledRecording:2	ISO/IEC 29341-4-14:2011
UPnP MediaRenderer:2 Device	ISO/IEC 29341-4-2
UPnP MediaServer:2 Device	ISO/IEC 29341-4-3
UPnP AV Datastructure Template:1	ISO/IEC 29341-4-4:2008
UPnP AV Datastructure Template:1	ISO/IEC 29341-4-4:2011
UPnP DigitalSecurityCamera:1 Device	ISO/IEC 29341-5-1
UPnP DigitalSecurityCameraMotionImage:1 Service	ISO/IEC 29341-5-10
UPnP DigitalSecurityCameraSettings:1 Service	ISO/IEC 29341-5-11
UPnP DigitalSecurityCameraStillImage:1 Service	ISO/IEC 29341-5-12
UPnP HVAC_System:1 Device	ISO/IEC 29341-6-1
UPnP ControlValve:1 Service	ISO/IEC 29341-6-10
UPnP HVAC_FanOperatingMode:1 Service	ISO/IEC 29341-6-11
UPnP FanSpeed:1 Service	ISO/IEC 29341-6-12
UPnP HouseStatus:1 Service	ISO/IEC 29341-6-13
UPnP HVAC_SetpointSchedule:1 Service	ISO/IEC 29341-6-14
UPnP TemperatureSensor:1 Service	ISO/IEC 29341-6-15
UPnP TemperatureSetpoint:1 Service	ISO/IEC 29341-6-16
UPnP HVAC_UserOperatingMode:1 Service	ISO/IEC 29341-6-17
UPnP HVAC_ZoneThermostat:1 Device	ISO/IEC 29341-6-2

UPnP BinaryLight:1 Device	ISO/IEC 29341-7-1
UPnP Dimming:1 Service	ISO/IEC 29341-7-10
UPnP SwitchPower:1 Service	ISO/IEC 29341-7-11
UPnP DimmableLight:1 Device	ISO/IEC 29341-7-2
UPnP InternetGatewayDevice:1 Device	ISO/IEC 29341-8-1
UPnP LANHostConfigManagement:1 Service	ISO/IEC 29341-8-10
UPnP Layer3Forwarding:1 Service	ISO/IEC 29341-8-11
UPnP LinkAuthentication:1 Service	ISO/IEC 29341-8-12
UPnP RadiusClient:1 Service	ISO/IEC 29341-8-13
UPnP WANCableLinkConfig:1 Service	ISO/IEC 29341-8-14
UPnP WANCommonInterfaceConfig:1 Service	ISO/IEC 29341-8-15
UPnP WANDSLLinkConfig:1 Service	ISO/IEC 29341-8-16
UPnP WANEthernetLinkConfig:1 Service	ISO/IEC 29341-8-17
UPnP WANIPConnection:1 Service	ISO/IEC 29341-8-18
UPnP WANPOTSLinkConfig:1 Service	ISO/IEC 29341-8-19
UPnP LANDevice:1 Device	ISO/IEC 29341-8-2
UPnP WANPPPConnection:1 Service	ISO/IEC 29341-8-20
UPnP WLANConfiguration:1 Service	ISO/IEC 29341-8-21
UPnP WANDevice:1 Device	ISO/IEC 29341-8-3
UPnP WANConnectionDevice:1 Device	ISO/IEC 29341-8-4
UPnP WLANAccessPointDevice:1 Device	ISO/IEC 29341-8-5
UPnP Printer:1 Device	ISO/IEC 29341-9-1
UPnP ExternalActivity:1 Service	ISO/IEC 29341-9-10
UPnP Feeder:1.0 Service	ISO/IEC 29341-9-11
UPnP PrintBasic:1 Service	ISO/IEC 29341-9-12
UPnP Scan:1 Service	ISO/IEC 29341-9-13
UPnP Scanner:1.0 Device	ISO/IEC 29341-9-2
UPnP QoS Architecture:1.0	ISO/IEC 29341-10-1
UPnP QosDevice:1 Service	ISO/IEC 29341-10-10
UPnP QosManager:1 Service	ISO/IEC 29341-10-11
UPnP QosPolicyHolder:1 Service	ISO/IEC 29341-10-12
UPnP QoS Architecture:2	ISO/IEC 29341-11-1
UPnP QosDevice:2 Service	ISO/IEC 29341-11-10
UPnP QosManager:2 Service	ISO/IEC 29341-11-11
UPnP QosPolicyHolder:2 Service	ISO/IEC 29341-11-12
UPnP QOS v2 Schema Files	ISO/IEC 29341-11-2
UPnP RemoteUIClientDevice:1 Device	ISO/IEC 29341-12-1
UPnP RemoteUIClient:1 Service	ISO/IEC 29341-12-10
UPnP RemoteUIServer:1 Service	ISO/IEC 29341-12-11
UPnP RemoteUIServerDevice:1 Device	ISO/IEC 29341-12-2
UPnP DeviceSecurity:1 Service	ISO/IEC 29341-13-10
UPnP SecurityConsole:1 Service	ISO/IEC 29341-13-11
UPnP ContentDirectory:3 Service	ISO/IEC 29341-14-12:2011
UPnP MediaServer:3 Device	ISO/IEC 29341-14-3:2011
UPnP ContentSync:1	ISO/IEC 29341-15-10:2011
UPnP Low Power Architecture:1	ISO/IEC 29341-16-1:2011
UPnP LowPowerProxy:1 Service	ISO/IEC 29341-16-10:2011

UPnP LowPowerDevice:1 Service	ISO/IEC 29341-16-11:2011
UPnP QoS Architecture:3	ISO/IEC 29341-17-1:2011
UPnP QoSDevice:3 Service	ISO/IEC 29341-17-10:2011
UPnP QoSManager:3 Service	ISO/IEC 29341-17-11:2011
UPnP QoSPolicyHolder:3 Service	ISO/IEC 29341-17-12:2011
UPnP QoSDevice:3 Addendum	ISO/IEC 29341-17-13:2011
UPnP RemoteAccessArchitecture:1	ISO/IEC 29341-18-1:2011
UPnP InboundConnectionConfig:1 Service	ISO/IEC 29341-18-10:2011
UPnP RADAConfig:1 Service	ISO/IEC 29341-18-11:2011
UPnP RADASync:1 Service	ISO/IEC 29341-18-12:2011
UPnP RATAConfig:1 Service	ISO/IEC 29341-18-13:2011
UPnP RAClient:1 Device	ISO/IEC 29341-18-2:2011
UPnP RAServer:1 Device	ISO/IEC 29341-18-3:2011
UPnP RADiscoveryAgent:1 Device	ISO/IEC 29341-18-4:2011
UPnP SolarProtectionBlind:1 Device	ISO/IEC 29341-19-1:2011
UPnP TwoWayMotionMotor:1 Service	ISO/IEC 29341-19-10:2011
UPnP AV Architecture:2	ISO/IEC 29341-20-1
UPnP AVTransport:3 Service	ISO/IEC 29341-20-10
UPnP ConnectionManager:3 Service	ISO/IEC 29341-20-11
UPnP ContentDirectory:4 Device	ISO/IEC 29341-20-12
UPnP RenderingControl:3 Service	ISO/IEC 29341-20-13
UPnP ScheduledRecording:2 Service	ISO/IEC 29341-20-14
UPnP MediaRenderer:3 Service	ISO/IEC 29341-20-2
UPnP MediaServer:4 Device	ISO/IEC 29341-20-3
UPnP AV Datastructure Template:1	ISO/IEC 29341-20-4
UPnP InternetGatewayDevice:2 Device	ISO/IEC 29341-24-1
UPnP WANIPConnection:2 Service	ISO/IEC 29341-24-10
UPnP WANIPv6FirewallControl:1 Service	ISO/IEC 29341-24-11
UPnP WANConnectionDevice:2 Service	ISO/IEC 29341-24-2
UPnP WANDevice:2 Device	ISO/IEC 29341-24-3
UPnP Telephony Architecture:2	ISO/IEC 29341-26-1
UPnP CallManagement:2 Service	ISO/IEC 29341-26-10
UPnP MediaManagement:2 Service	ISO/IEC 29341-26-11
UPnP Messaging:2 Service	ISO/IEC 29341-26-12
UPnP PhoneManagement:2 Service	ISO/IEC 29341-26-13
UPnP AddressBook:1 Service	ISO/IEC 29341-26-14
UPnP Calendar:1 Service	ISO/IEC 29341-26-15
UPnP Presense:1 Service	ISO/IEC 29341-26-16
UPnP TelephonyClient:2 Device	ISO/IEC 29341-26-2
UPnP TelephonyServer:2 Device	ISO/IEC 29341-26-3
UPnP Friendly Info Update:1 Service	ISO/IEC 29341-27-1
UPnP MultiScreen MultiScreen Architecture:1	ISO/IEC 29341-28-1
UPnP MultiScreen Application Management:1 Service	ISO/IEC 29341-28-10
UPnP MultiScreen Screen:1 Device	ISO/IEC 29341-28-2
UPnP MultiScreen Application Management:2 Service	ISO/IEC 29341-29-10
UPnP MultiScreen Screen:2 Device	ISO/IEC 29341-29-2
UPnP IoT Management and Control Architecture Overview:1	ISO/IEC 29341-30-1

ISO/IEC 29341-30-2:2017(E)

UPnP DataStore:1 Service	ISO/IEC 29341-30-10
UPnP IoT Management and Control Data Model:1 Service	ISO/IEC 29341-30-11
UPnP IoT Management and Control Transport Generic:1 Service	ISO/IEC 29341-30-12
UPnP IoT Management and Control:1 Device	ISO/IEC 29341-30-2
UPnP Energy Management:1 Service	ISO/IEC 29341-31-1

1 Scope

This document defines the device for IOT Management and Control, which identifies Level 1 of the device named IOT Management and Control. This Publicly Available Specification is applicable to Standardized DCPs of the UPnP Forum which include this device.

This device definition is compliant with the UPnP Device Architecture version 1.0 [1]. It defines a device type referred to herein as IOT Management and Control device.

This specification defines a general-purpose device that can be used to instantiate a bridge or gateway device that is connected to Sensors and Actuators. This device implements a bridge between the UPnP network and Sensors/Actuators endpoints. It exposes services to check the status, and send and receive data from Sensors. Sensors/Actuators may be connected using a variety of transport protocols including Bluetooth, ZigBee and IEEE 11073.

The device defined herein provides the following capabilities:

1. Access and control of multiple Sensors and Actuators.
2. Expose configuration information from Sensors and Actuators.

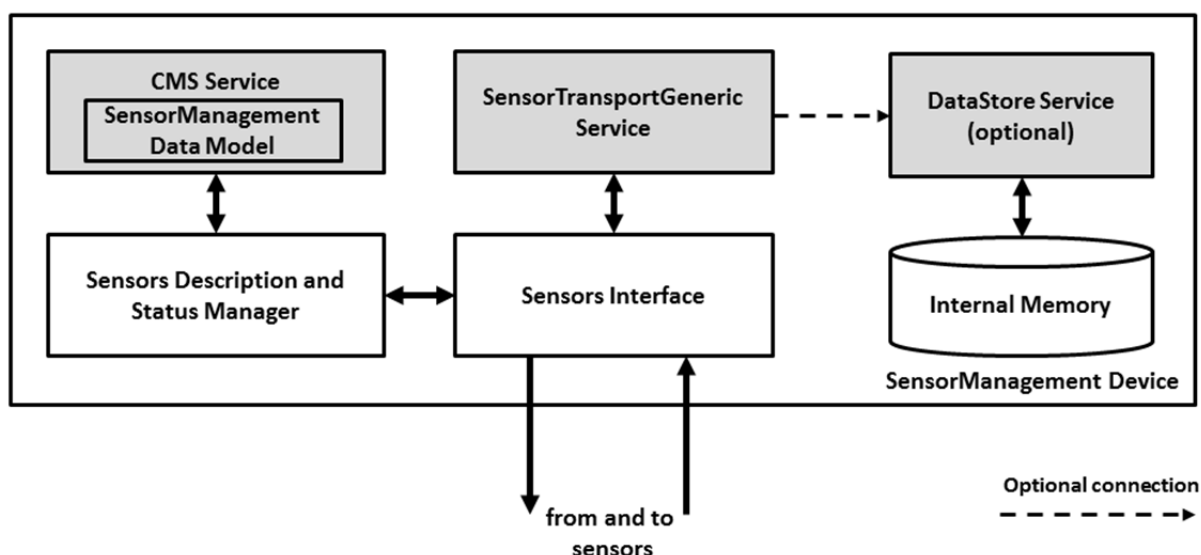


Figure 1 — IOT Management and Control Device Functional Diagram

The shaded boxes represent UPnP services that are contained by the IOT Management and Control device. The un-shaded boxes represent device specific modules that are vendor specific.

2 Normative References

The following referenced documents are indispensable for the application of this document. For dated references, only the edition cited applies. For undated references, the latest edition of the referenced document (including any amendments) applies.

[1] – UPnP Device Architecture, version 1.0, UPnP Forum, June 13, 2000. Available at: http://upnp.org/specs/arch/UPnPDA10_20000613.pdf. Latest version available at: <http://upnp.org/specs/arch/UPnP-arch-DeviceArchitecture-v1.0.pdf>.

[2] – UPnP IoT Management and Control Architecture Overview, UPnP Forum, July 1, 2013. Available at: <http://www.upnp.org/specs/iotmc/UPnP-iotmc-IoTManagementAndControl-Architecture-Overview-v1-20130701.pdf>. Latest version available at: <http://www.upnp.org/specs/iotmc/UPnP-iotmc-IoTManagementAndControl-Architecture-Overview-v1.pdf>.

- [3] – UPnP IoTManagementAndControlTransportGeneric:1 Service, UPnP Forum July 1, 2013. Available at: <http://www.upnp.org/specs/iotmc/UPnP-smgt-SensorTransportGeneric-v1-Service-20130701.pdf>. Latest version available at: <http://www.upnp.org/specs/smgt/UPnP-smgt-SensorTransportGeneric-v1-Service.pdf>.
- [4] – UPnP DataStore:1 Service, UPnP Forum, July 1, 2013. Available at: <http://www.upnp.org/specs/ds/UPnP-ds-DataStore-v1-Service-20130701.pdf>. Latest version available at: <http://www.upnp.org/specs/ds/UPnP-ds-DataStore-v1-Service.pdf>.
- [5] – UPnP IoTManagementAndControl DataModel Service, UPnP Forum, July 1, 2013. Available at: <http://www.upnp.org/specs/iotmc/UPnP-iotmc-IOTManagementAndControl-DataModel-v1-Service-20130701.pdf>. Latest version available at: <http://www.upnp.org/specs/iotmc/UPnP-iotmc-IOTManagementAndControl-rDataModel-v1-Service.pdf>.
- [6] – UPnP DeviceProtection:1 Service, UPnP Forum, February 24, 2011. Available at: <http://www.upnp.org/specs/gw/UPnP-gw-DeviceProtection-v1-Service-20110224.pdf>. Latest version available at: <http://www.upnp.org/specs/gw/UPnP-gw-DeviceProtection-v1-Service.pdf>.
- [7] – UPnP ConfigurationManagement:2 Service, UPnP Forum, February 16, 2012. Available at: <http://www.upnp.org/specs/dm/UPnP-dm-ConfigurationManagement-v2-Service-20120216.pdf>. Latest version available at: <http://www.upnp.org/specs/dm/UPnP-dm-ConfigurationManagement-v2-Service.pdf>.
- [8] – IETF RFC 2119, Key words for use in RFCs to Indicate Requirement Levels, S. Bradner, 1997. Available at: <http://www.faqs.org/rfcs/rfc2119.html>.
- [9] – Extensible Markup Language (XML) 1.0 (Third Edition), François Yergeau, Tim Bray, Jean Paoli, C. M. Sperberg-McQueen, Eve Maler, eds., W3C Recommendation, February 4, 2004. Available at: <http://www.w3.org/TR/2004/REC-xml-20040204>.
- [10] – XML Schema Part 2: Data Types, Second Edition, Paul V. Biron, Ashok Malhotra, W3C Recommendation, 28 October 2004. Available at: <http://www.w3.org/TR/2004/REC-xmlschema-2-20041028>.

3 Terms, Definitions and Abbreviations

For the purposes of this document, the terms and definitions given in [1] and [2] apply.

4 Notations and conventions

4.1 Notation

- Strings that are to be taken literally are enclosed in “double quotes”.
- Words that are emphasized are printed in *italic*.
- Keywords that are defined by the UPnP Working Committee are printed using the *forum* character style.
- Keywords that are defined by the UPnP Device Architecture are printed using the *arch* character style.
- A double colon delimiter, “::”, signifies a hierarchical parent-child (parent::child) relationship between the two objects separated by the double colon. This delimiter is used in multiple contexts, for example: Service::Action(), Action():Argument, parentProperty::childProperty.

4.2 Data Types

This specification uses data type definitions from two different sources. The UPnP Device Architecture defined data types are used to define state variable and action argument data types [1]. The XML Schema namespace is used to define property data types [10].

For UPnP Device Architecture defined Boolean data types, it is strongly RECOMMENDED to use the value “0” for false, and the value “1” for true. The values “true”, “yes”, “false”, or “no” MAY also be used but are NOT RECOMMENDED. The values “yes” and “no” are deprecated and MUST NOT be sent out by devices but MUST be accepted on input.

For XML Schema defined Boolean data types, it is strongly RECOMMENDED to use the value “0” for false, and the value “1” for true. The values “true”, “yes”, “false”, or “no” MAY also be used but are NOT RECOMMENDED. The values “yes” and “no” are deprecated and MUST NOT be sent out by devices but MUST be accepted on input.

4.3 Vendor-defined Extensions

Whenever vendors create additional vendor-defined state variables, actions or properties, their assigned names and XML representation MUST follow the naming conventions and XML rules as specified in UPnP Device Architecture [1], Clause 2.5, “Description: Non-standard vendor extensions”.

5 Device Definitions

The requirements in this section apply only when *IOT Management and Control* device is used.

5.1 Device Type

The following URN identifies a device that is compliant with this specification:

urn:schemas-upnp-org:device:SensorManagement:1

IOT Management and Control device is used herein to refer to this device type.

5.2 Device Model

Products that expose IOT Management and Control devices must implement the minimum version numbers of all required embedded devices and services specified in the table below. A IOT Management and Control device can be either a *Root* device or can be *Embedded* in another UPnP device. A IOT Management and Control device (*Root* or *Embedded*) can in turn contain other standard or non-standard *Embedded* UPnP devices.

Table 1 — Device Requirements

DeviceType	Root	Req. or Opt. ^a	ServiceType	Req. or Opt. ^a	Service ID ^b
<i>SensorManagement:1</i>	<i>Root</i> or <i>Embedded</i>	<i>R</i>	<i>ConfigurationManagement:2</i>	<i>R</i>	<i>Configuration Management</i>
			<i>SensorTransportGeneric:1</i>	<i>R</i>	<i>SensorTransportGeneric</i>
			<i>DeviceProtection:1</i>	<i>A</i>	<i>DeviceProtection</i>
			<i>DataStore:1</i>	<i>A</i>	<i>DataStore</i>
			Standard non-EHS services defined by UPnP (QoS, Security, etc.) go here.	<i>X</i>	TBD
			Non-standard services embedded by a UPnP vendor go here.	<i>X</i>	TBD
<i>Standard devices embedded by an UPnP vendor go here.</i>	<i>Embedded</i>	<i>O</i>	<i>Services as defined by the corresponding standard UPnP Device Definition go here.</i>		
<i>Non-standard devices embedded by an UPnP vendor go here.</i>	<i>Embedded</i>	<i>X</i>	TBD	TBD	TBD

- a R = required, A = allowed, CR = conditionally required, CA = conditionally allowed, X = Non-standard, add -D when deprecated (e.g., R-D, A-D).
- b Prefixed by urn:upnp-org:serviceId:

5.2.1 Description of Device Requirements

Any instance of a IOT Management and Control device shall have two services: a single instance of the ConfigurationManagement service [7] and a single instance of the TransportGeneric service [3]. The DeviceProtection service [6] shall be present if IoT Management and Control device implementation requires the security and privacy features, as described in the UPnP IoT Management and Control Architecture Overview [2]. An allowed DataStore service [4] may be present if IoT Management and Control device stores sensor's data information.

The ConfigurationManagement service [7] allows control points to configure and check the status of sensors managed by IoT Management and Control device. Additionally, the ConfigurationManagement service allows control points to discover useful information about sensors, such as its type, transport mechanism, etc. See UPnP IoT Management and Control DataModel service [5] for more details about the use of ConfigurationManagement service in the IoT Management and Control device and the UPnP IoT Management and Control Architecture Overview [2].

5.2.2 Relationships Between Services

The IoT Management and Control DataModel service [5] is the start point for sensors management using UPnP. Using the ConfigurationManagement service the control point shall check which transport protocols are supported by the device. The control point, then, shall use the TransportGeneric service [3] to read and write sensors data to a specific sensor using a supported data format.

Sensors managed by the TransportGeneric service [3] can be connected directly to other UPnP services or end-points. For example, a TransportGeneric service from a IoT Management and Control device can be connected to a DataStore service [4] from other UPnP device using the SensorTransportGeneric::ConnectDevice() action. This connection make possible transfer of sensor's data without UPnP action calls or UPnP events. Sensors can be read directly using SensorsTransportGeneric::ReadSensor() action. Data can be written to sensors/actuators using SensorTransportGeneric::WriteSensor() action.

6 XML Device Description

```
<?xml version="1.0"?>
<root xmlns="urn:schemas-upnp-org:device-1-0">
  <specVersion>
    <major>1</major>
    <minor>0</minor>
  </specVersion>
  <URLBase>base URL for all relative URLs</URLBase>
  <device>
    <deviceType>
      urn:schemas-upnp-org:device:SensorManagement:1
    </deviceType>
    <friendlyName>short user-friendly title</friendlyName>
    <manufacturer>manufacturer name</manufacturer>
    <manufacturerURL>URL to manufacturer site</manufacturerURL>
    <modelDescription>long user-friendly title</modelDescription>
    <modelName>model name</modelName>
    <modelNumber>model number</modelNumber>
    <modelURL>URL to model site</modelURL>
    <serialNumber>manufacturer's serial number</serialNumber>
    <UDN>uuid:UUID</UDN>
    <UPC>Universal Product Code</UPC>
    <iconList>
      <icon>
        <mimetype>image/format</mimetype>
      </icon>
    </iconList>
  </device>
</root>
```

```

        <width>horizontal pixels</width>
        <height>vertical pixels</height>
        <depth>color depth</depth>
        <url>URL to icon</url>
    </icon>
    XML to declare other icons, if any, go here
</iconList>
<serviceList>
    <service>
        <serviceType>
            urn:schemas-upnp-org:service:SensorTransportGeneric:1
        </serviceType>
        <serviceId>
            urn:upnp-org:serviceId:SensorTransportGeneric
        </serviceId>
        <SCPDURL>URL to service description</SCPDURL>
        <controlURL>URL for control</controlURL>
        <eventSubURL>URL for eventing</eventSubURL>
    </service>
    <service>
        <serviceType>
            urn:schemas-upnp-org:service:ConfigurationManagement:2
        </serviceType>
        <serviceId>
            urn:upnp-org:serviceId:ConfigurationManagement
        </serviceId>
        <SCPDURL>URL to service description</SCPDURL>
        <controlURL>URL for control</controlURL>
        <eventSubURL>URL for eventing</eventSubURL>
    </service>
    <service>
        <serviceType>
            urn:schemas-upnp-org:service:DataStore:1
        </serviceType>
        <serviceId>
            urn:upnp-org:serviceId:DataStore
        </serviceId>
        <SCPDURL>URL to service description</SCPDURL>
        <controlURL>URL for control</controlURL>
        <eventSubURL>URL for eventing</eventSubURL>
    </service>
    <service>
        <serviceType>
            urn:schemas-upnp-org:service:DeviceProtection:1
        </serviceType>
        <serviceId>
            urn:upnp-org:serviceId:DeviceProtection
        </serviceId>
        <SCPDURL>URL to service description</SCPDURL>
        <controlURL>URL for control</controlURL>
        <eventSubURL>URL for eventing</eventSubURL>
    </service>

    Declarations for standard non-EHS services defined by UPnP
    (if any) go here
    Declarations for other services added by UPnP vendor
    (if any) go here
</serviceList>
<deviceList>
    Description of embedded devices added by UPnP vendor
    (if any) go here
</deviceList>
    <presentationURL>URL for presentation</presentationURL>
</device>
</root>

```

Annex A - Theory of Operation (informative)

A.1 Introduction

A IoT Management and Control device allows a control point to read from and write data to Sensors or Actuators. IoT Management and Control devices can be used in conjunction with one or more UPnP devices to store sensor's data using a DataStore service [4]. The process starts when a control point discovers a IoT Management and Control device. The control point can read and write data directly to IoT Management and Control device using SensorTransportGeneric service [3]. The control point can also connect a IoT Management and Control device to an external storage device using [SensorTransportGeneric::ConnectSensor\(\)](#) and [SensorTransportGeneric::DisconnectSensor\(\)](#) actions. The data transfer is performed directly by the IoT Management and Control device and the other device. The data transfer happens independently from the control point. The control point uses UPnP to setup the data transfer, but the transfer is performed using HTTP based transfer protocol.

Therefore, the main operations performed by IoT Management and Control devices are:

- Discovery, configuration and status reading of sensors and actuators.
- Reading and writing of data to sensors or actuators using SensorTransportGeneric service.
- Connecting of IoT Management and Control to external storage devices, where these devices can be UPnP devices or any other type of device supporting HTTP transport.
- Provide allowed access control based on privacy and security settings.

A.2 Device Discovery

Control points can discover IoT Management and Control devices using the standard UPnP SSDP-based device discovery mechanism to search for any device that is a member of the IOT Management and Control device class including [Root](#) devices and/or [Embedded](#) devices.

A.3 Sensor Discovery, Configuration and Status Reading

Using the ConfigurationManagement service [7] (CMS), Control Points find description information about Sensors and Actuators managed by IoT Management and Control device. CMS allows Control points to retrieve and manipulate information regarding transport type, sensor IDs, description, status of sensors, etc. For more information about what information is available using ConfigurationManagement service see the IoT Management and Control DataModel service document [5].

Information provided by ConfigurationManagement service shall be used in actions provided by TransportGeneric service [3]. For example, if a Control Point invokes [SensorTransportGeneric::Connect\(\)](#) action, it is necessary to first have the [SensorTransportGeneric::SensorID](#) information, which is available as a Parameter in the IoT Management and Control DataModel service [5]. The IoT Management and Control DataModel service also describes what type of Sensors and Actuators are available in the IOT Management and Control device. The type information can be used by Control Points to identify DataItems to be included in the DataRecord provided by the IOT Management and Control device.

A.4 Reading and Writing of Data

Reading and writing of data to Sensors and Actuators is the main function of a IoT Management and Control device. For this function, a Control Point first discovers the [SensorTransportGeneric::SensorID](#) of the Sensor. The Control Point must use CMS actions to discover and read the parameter [/UPnP/SensorMgt/SensorDevice/#/Sensors/#/SensorID](#). With the [SensorID](#) value, the Control Point can invoke [SensorTransportGeneric::ReadSensor\(\)](#) or [SensorTransportGeneric::WriteSensor\(\)](#) actions. Figure A.1 illustrates how the reading and writing flow is executed. This flow can be described as follows:

- 1) The Control Point (CP) uses the IoT Management and Control device's Configuration Management service to get the SensorID of the Sensor device that will be used to read and write operations.
- 2) CP invokes SensorTransportGeneric::WriteSensor to write DataRecords in a Sensor device and SensorTransportGeneric::ReadSensor to read DataRecords from a Sensor Device.
- 3) SensorTransportGeneric service interfaces with Sensors device and execute the necessary operations.

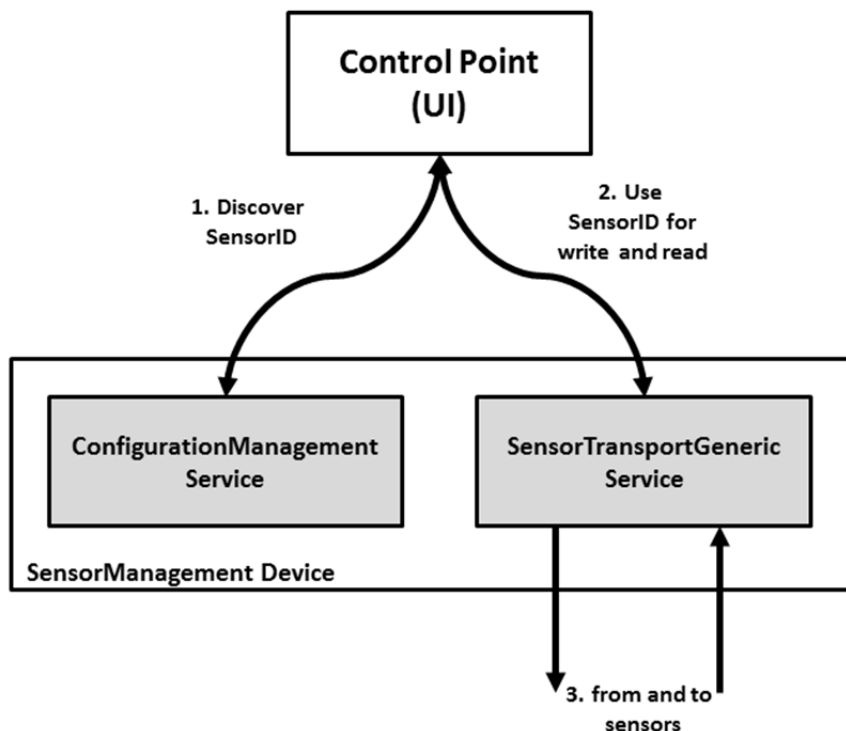


Figure A.1 —Simple Read and Write Flow Diagram.

A.5 Connecting Sensors to Transport Clients

A IoT Management and Control device can connect to transport client(s) in the UPnP network. This includes devices hosting a DataStore service [4] as well as other UPnP transport clients intending to accept sensor data. Figure A.2 illustrates the flow to connect a IOT Management and Control device to an external DataStore service. This flow can be described as follows:

- 1) The Control Point (CP) uses the IoT Management and Control device's Configuration Management service to get the SensorID of the Sensor device that will be connected with the external storage.
- 2) CP invokes DataStore::GetDataStoreTransportURL() to retrieve the URL that shall receive DataRecords from the Sensor.
- 3) CP invokes SensorTransportGeneric::Connect() to connect the Sensor with the DataStore using the SensorID and transport URL acquired previously.
- 4) TransportGeneric service receives new data from the Sensor and creates DataRecords.
- 5) New DataRecords available for the Sensor are delivered directly to the DataStore using the previously configured transport URL.

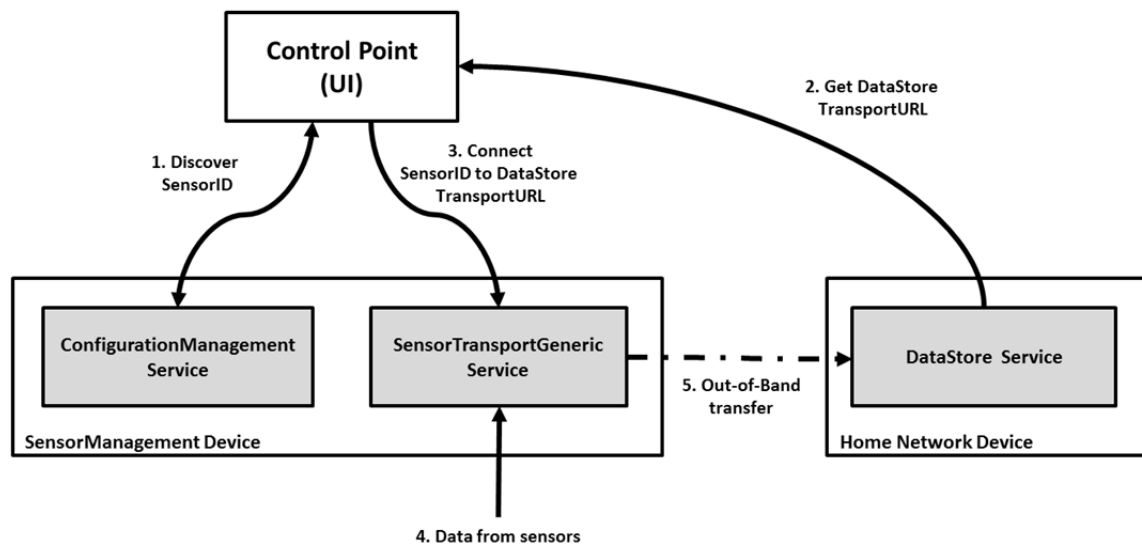


Figure A.2 — Connecting a IoT Management and Control Device to an External Storage.

