
**Information technology —
Telecommunications and information
exchange between systems — Private
Integrated Services Network —
Specification, functional model and
information flows — Message centre
monitoring and mailbox identification
supplementary services**

*Technologies de l'information — Télécommunications et échange
d'information entre systèmes — Réseau privé à intégration de
services — Spécification, modèle fonctionnel et flux d'informations —
Services supplémentaires de surveillance du centre du message et
d'identification de boîte aux lettres*

PDF disclaimer

This PDF file may contain embedded typefaces. In accordance with Adobe's licensing policy, this file may be printed or viewed but shall not be edited unless the typefaces which are embedded are licensed to and installed on the computer performing the editing. In downloading this file, parties accept therein the responsibility of not infringing Adobe's licensing policy. The ISO Central Secretariat accepts no liability in this area.

Adobe is a trademark of Adobe Systems Incorporated.

Details of the software products used to create this PDF file can be found in the General Info relative to the file; the PDF-creation parameters were optimized for printing. Every care has been taken to ensure that the file is suitable for use by ISO member bodies. In the unlikely event that a problem relating to it is found, please inform the Central Secretariat at the address given below.

© ISO/IEC 2004

All rights reserved. Unless otherwise specified, no part of this publication may be reproduced or utilized in any form or by any means, electronic or mechanical, including photocopying and microfilm, without permission in writing from either ISO at the address below or ISO's member body in the country of the requester.

ISO copyright office
Case postale 56 • CH-1211 Geneva 20
Tel. + 41 22 749 01 11
Fax + 41 22 749 09 47
E-mail copyright@iso.org
Web www.iso.org

Published in Switzerland

Contents

Page

Foreword	iv
Introduction	v
1 Scope	1
2 Conformance	1
3 Normative references	1
4 Terms and definitions	2
4.1 External definitions	2
4.2 Other definitions	2
5 Acronyms	4
6 SS-MCM stage 1 specification	4
6.1 Description	4
6.2 Procedures	5
6.3 Interactions with other Supplementary Services / Additional Network Features	9
6.4 Interworking considerations	12
6.5 Overall SDL	12
7 SS-MID stage 1 specification	15
7.1 Description	15
7.2 Procedures	15
7.3 Interactions with other Supplementary Services / Additional Network Features	16
7.4 Interworking considerations	19
7.5 Overall SDL	19
8 SS-MCM stage 2 specification	21
8.1 Functional model	21
8.2 Information flows	22
8.3 Functional Entity actions	31
8.4 Functional Entity behaviour	33
8.5 Allocation of Functional Entities to physical equipment	52
8.6 Interworking considerations	52
9 SS-MID stage 2 specification	52
9.1 Functional model	52
9.2 Information flows	53
9.3 Functional Entity actions	56
9.4 Functional Entity behaviour	56
9.5 Allocation of Functional Entities to physical equipment	62
9.6 Interworking considerations	62

Foreword

ISO (the International Organization for Standardization) and IEC (the International Electrotechnical Commission) form the specialized system for worldwide standardization. National bodies that are members of ISO or IEC participate in the development of International Standards through technical committees established by the respective organization to deal with particular fields of technical activity. ISO and IEC technical committees collaborate in fields of mutual interest. Other international organizations, governmental and non-governmental, in liaison with ISO and IEC, also take part in the work. In the field of information technology, ISO and IEC have established a joint technical committee, ISO/IEC JTC 1.

International Standards are drafted in accordance with the rules given in the ISO/IEC Directives, Part 2.

The main task of the joint technical committee is to prepare International Standards. Draft International Standards adopted by the joint technical committee are circulated to national bodies for voting. Publication as an International Standard requires approval by at least 75 % of the national bodies casting a vote.

Attention is drawn to the possibility that some of the elements of this document may be the subject of patent rights. ISO and IEC shall not be held responsible for identifying any or all such patent rights.

ISO/IEC 20116 was prepared by ECMA (as ECMA-346) and was adopted, under a special “fast-track procedure”, by Joint Technical Committee ISO/IEC JTC 1, *Information technology*, in parallel with its approval by national bodies of ISO and IEC.

Introduction

This International Standard is one of a series defining services and signalling protocols applicable to Private Integrated Services Networks (PISNs). The series uses ISDN concepts as developed by ITU-T and conforms to the framework of International Standards for Open Systems Interconnection as defined by ISO/IEC.

This particular International Standard specifies the Message Centre Monitoring and Mailbox Identification supplementary service.

SS-MCM is based on SS-MWI and includes its entire functionality. The interoperability with SS-MWI is guaranteed. Compared to SS-MWI, SS-MCM offers an enhanced functionality for monitoring status changes of messages stored in the Served User's Mailbox as follows:

- individual activation and deactivation for the monitoring of messages of different Message Type(s) within the Mailbox as well as interrogation of the actual SS-MCM configuration;
- retrieval of information about all messages (i.e. new and retrieved messages) in the mailbox independent of the Message Status;
- request of detailed updated information about messages stored in the mailbox at every time.

This International Standard is based upon the practical experience of ECMA member companies and the results of their active and continuous participation in the work of ISO/IEC JTC1, ITU-T, ETSI and other international and national standardization bodies. It represents a pragmatic and widely based consensus.

Information technology — Telecommunications and information exchange between systems — Private Integrated Services Network — Specification, functional model and information flows — Message centre monitoring and mailbox identification supplementary services

1 Scope

This International Standard specifies supplementary service Message Centre Monitoring/Mailbox Identification (SS-MCM/MID), which is related, but not limited, to various basic services supported by Private Integrated Services Networks (PISNs). Basic services are specified in ISO/IEC 11574.

The supplementary service MCM enables a Served User to get informed by a Message Centre about the status and status changes of messages stored in that Served Users Mailbox.

The supplementary service MID enables a Message Centre to identify a specific mailbox of a Served User in case that the Served User has more than one Mailbox within the Message Centre. In addition SS-MID enables a Served User to authenticate himself/herself at a specific Mailbox located within the Message Centre.

Service specifications are produced in three stages, according to the method described in ETS 300 387. This International Standard contains the stage 1 and stage 2 specifications of SS-MCM/MID. The stage 1 specification (Clauses 6 and 7) specifies the supplementary service as seen by users of PISNs. The stage 2 specification (Clauses 8 and 9) specifies the functional entities involved in the supplementary service and the information flows between them.

2 Conformance

In order to conform to this International Standard, a stage 3 standard shall specify signalling protocols and equipment behaviour that are capable of being used in a PISN which supports the supplementary service specified in this International Standard. This means that, to claim conformance, a stage 3 standard is required to be adequate for the support of those aspects of Clauses 6 and 7 (stage 1) and Clauses 8 and 9 (stage 2) which are relevant to the interface or equipment to which the stage 3 standard applies.

3 Normative references

The following referenced documents are indispensable for the application of this document. For dated references, only the edition cited applies. For undated references, the latest edition of the referenced document (including any amendments) applies.

ISO/IEC 11574:2000, *Information technology — Telecommunications and information exchange between systems — Private Integrated Services Network — Circuit-mode 64 kbit/s bearer services — Service description, functional capabilities and information flows*

ISO/IEC 11579-1:1994, *Information technology — Telecommunications and information exchange between systems — Private integrated services network — Part 1: Reference configuration for PISN Exchanges (PINX)*

ISO/IEC 15505:2003, *Information technology — Telecommunications and information exchange between systems — Private Integrated Services Network — Specification, functional model and information flows — Message Waiting Indication supplementary service*

ETS 300 387:1994, *Private Telecommunication Network (PTN); Method for the specification of basic and supplementary services*

ITU-T Rec. I.112:1993, *Vocabulary of terms for ISDNs*

ITU-T Rec. I.210:1993, *Principles of telecommunication services supported by an ISDN and the means to describe them*

ITU-T Rec. Z.100:1999, *Specification and Description Language*

4 Terms and definitions

For the purposes of this document, the following terms and definitions apply.

4.1 External definitions

This International Standard uses the following terms defined in other documents:

— Private Integrated services Network eXchange (PINX)	(ISO/IEC 11579-1)
— Private Integrated Services Network (PISN)	(ISO/IEC 11579-1)
— Service	(ITU-T Rec. I.112)
— Signalling	(ITU-T Rec. I.112)
— Supplementary Service	(ITU-T Rec. I.210)
— Telecommunication Service	(ISO/IEC 11574)
— User	(ISO/IEC 11574)

4.2 Other definitions

4.2.1

Address Header

The Address Header includes Originator address information and, optionally, the receiving time stamp and the priority of one specific message.

4.2.2

Complete Information

A complete list of Address Headers of either all New or all Retrieved Messages of one specific Message Type in a Mailbox.

4.2.3

Compressed Information

Includes the number of either all New or all Retrieved Messages of one specific Message Type. Optionally, in the compressed information the Originator address, the priority level and the time stamp of the highest priority message can be included. If there is more than one message of the highest priority the optional information shall be related to the latest received highest priority message.

4.2.4**Deleted Messages**

A message of any Message Type which was previously stored in the Mailbox but which is not available anymore due to deletion by the Served User.

4.2.5**Mailbox**

A logical entity within a Message Centre which stores all messages (New Messages and Retrieved Messages) of one or more Message Types for one specific Served User who is registered at the Message Centre.

4.2.6**Message Centre (MC)**

The entity within the network which administrates Mailboxes for Served Users. The MC provides the Served User with information

- about each incoming New Message in the Served User's Mailbox and
- about Message Status changes (e.g. due to retrieval or deletion) in the Served User's Mailbox

by means of Complete or Compressed Information for New and Retrieved Messages. This information is provided by update procedures.

4.2.7**Message Status**

Describes whether a stored message at the Served User's Mailbox is a New Message or a Retrieved Message.

4.2.8**Message Type**

The type of a message stored at the MC. A Message Type indicates either the telecommunication service (e.g. speech, 3.1kHz audio, etc.) that is needed to retrieve a specific message via a PISN or the general type of a message that might not be directly retrieved by means of a PISN (e.g. email or video).

4.2.9**Message Waiting Signal**

Any type of signal presented to a Served User's terminal that is useful to draw a Served User's attention to the arrival of a New Message in the Served User's Mailbox.

NOTE The indication may be a lamp, special tone, display string etc. The technical realisation of the Message Waiting Signal is outside the scope of this International Standard.

4.2.10**New Message**

A message of any Message Type, which is stored in a Mailbox. The Served User has not yet retrieved the message.

4.2.11**Originator**

The user who has left a message at the Served User's Mailbox.

4.2.12**Originator address**

Address information (i.e. Party Number) of the originator.

4.2.13**Retrieved Message**

A message of any type, which is stored in a Mailbox. The Served User has already retrieved but not deleted the message (i.e. the message is no longer a New Message).

4.2.14

Served User

The owner of a specific Mailbox at a Message Centre. The Served User receives an indication about status changes of the messages in the Served User's Mailbox from the Message Centre.

5 Acronyms

FE	Functional Entity
ISDN	Integrated Services Digital Network
MCM	Message Centre Monitoring
MID	Mailbox Identification
MWI	Message Waiting Indication
PINX	Private Integrated services Network eXchange
PISN	Private Integrated Services Network
SDL	Specification and Description Language
SS	Supplementary Service

6 SS-MCM stage 1 specification

6.1 Description

6.1.1 General description

The supplementary service MCM enables a Message Centre to inform a registered Served User about the status and status changes of messages stored in this Served Users Mailbox. This can be due to the arrival of New Messages or the change of the Message Status of stored messages (e.g. retrieval or deletion of messages). Additionally the Served User can request the current status of the messages in the Mailbox from the Message Centre.

If there are New Messages for the Served User stored in the Mailbox a Message Waiting Signal may be set at the Served User's terminal.

Additionally a Served User might activate, deactivate or interrogate Message Centre Monitoring individually for the different Message Types.

NOTE 1 The procedures for how the Served User accesses the messages stored in the MC is outside the scope of this International Standard.

NOTE 2 The procedures for how a message can be left in a Served User's Mailbox is outside the scope of this International Standard.

SS-MCM is based on SS-MWI (ISO/IEC 15505) and includes its entire functionality. Therefore the interoperability with SS-MWI is guaranteed. Compared to SS-MWI, SS-MCM offers an enhanced functionality for monitoring status changes of messages stored in the Served User's Mailbox as follows:

- individual activation and deactivation for the monitoring of messages of different Message Type(s) within the Mailbox as well as interrogation of the actual SS-MCM configuration;

- retrieval of information about all messages (i.e. New and Retrieved Messages) in the mailbox independent of the Message Status;
- request of detailed updated information about messages stored in the Mailbox.

6.1.2 Qualifications on applicability to telecommunication services

This supplementary service does not apply directly to any basic telecommunication service. However, MCM relates to a basic service for which there are messages stored in the Served User's Mailbox.

6.2 Procedures

6.2.1 Provision / withdrawal

SS-MCM may be provided or withdrawn after pre-arrangement with the service provider or may be generally available to all users.

6.2.2 Normal procedures

6.2.2.1 Activation, deactivation and interrogation

In general, SS-MCM shall be available for all Served Users in a default configuration as arranged by the service provider. The default configuration defines the messages (i.e. a set of Message Types) which can be stored in principle in a Served User's Mailbox. The default configuration also defines whether complete information or compressed information about the messages of each specific Message Type is sent to the Served User.

By sending an appropriate indication to the MC the Served User can individually modify the configuration in the following manner:

- activation of either one or more of the predefined Message Types so that changes in the Mailbox of that activated Message Types will be presented to the Served User. After that the MC shall perform the Update procedure as described in 6.2.2.2.2;
- deactivation of either one or more of predefined Message Types so that changes in the Mailbox of that deactivated Message Types will not be presented to the Served User anymore. After that the MC shall perform the Update procedure as described in 6.2.2.2.2. In addition, an indication shall be given to the Served User stating that no information about New Messages or Retrieved Messages of this Message Type will be presented to the Served User while monitoring is deactivated;
- changing of the presentation style of SS-MCM information from complete information to compressed information or from compressed information to complete information for a specific Message Type.

NOTE The change from compressed information to complete information (and vice versa) for a specific Message Type is only possible if the MC supports this option.

- Re-setting of all the changed SS-MCM parameters to the default configuration.

In addition, the Served User can interrogate at the MC to get information about the actual configuration of SS-MCM. This means, that the Served User receives an actual list of all different Message Types (i.e. the kind of messages) from the MC, which can be presented to the Served User together with an indication whether the Served User gets the complete information or only the compressed information about the stored messages of the specific Message Type(s).

All described changes of the default configuration shall be initiated from the Served User (and confirmed with an appropriate indication by the MC) by using an already existing connection or by setting up a new call independent connection. Release of the call independent connection is the responsibility of the Served User.

6.2.2.2 Invocation and operation

SS-MCM enables a MC to send status information to a Served User about messages stored in the Mailbox of the Served User.

All information shall be delivered between the MC and the Served User by using an already existing connection or by setting up a new call independent connection. Release of the call independent connection is the responsibility of its initiator.

The sections below describe this behavior in detail.

6.2.2.2.1 Incoming New Message

Upon receipt of a new message in the Mailbox, the MC shall send an indication through the PISN towards the Served User with the following information:

- the address of the Served User;
- the Message Type of the specific New Message;
- optionally, the address of the Message Centre.

In addition to that, and depending on the presentation style that was selected in the configuration for New Messages of that specific Message Type (i.e. compressed or complete information), the following information shall be delivered through the PISN towards the Served User by the MC:

a) Compressed Mode:

- the number of New Messages waiting for that specific Message Type;
- optionally, the priority of the latest highest priority message waiting for that specific Message Type;
- optionally, the address of the user that left the latest highest priority message;
- optionally, the time when the latest highest priority message was left.

b) Complete Mode:

- optionally, the number of New Messages waiting for that specific Message Type;
- the address of the user that left the last incoming message;
- optionally, the priority of the last incoming message;
- optionally, the time of the last incoming message.

NOTE 1 This structure is the same as the corresponding information specified in SS-MWI.

If the Complete Mode was selected for a specific Message Type each arrival of a New Message shall be reported to the Served User. If the Compressed Mode was selected the new message arrival shall be reported by the MC using one of the following methods:

- each new message is reported individually;
- more than one message is reported by using a single indication.

The support of compressed information is mandatory, whereas the support of complete information is optional. Storing of the delivered information at the Served User is optional. In the case that the originator address is NOT a PISN number (e.g. Message Type is "email"), only the compressed mode shall be used.

Each receipt of New Message information from the MC shall be confirmed with an appropriate indication. In addition, a Message Waiting Signal shall be set (if applicable) for that specific Message Type at the Served User's terminal.

If there are no more New Messages of a specific Message Type available in the mailbox (i.e. the Served User has retrieved all messages of a specific Message Type), the MC shall send an indication through the PISN towards the Served User. This indication shall contain the following information:

- the address of the Served User;
- the Message Type(s) for which New Message(s) are no longer available;
- optionally, the address of the Message Centre.

NOTE 2 This structure is the same as the corresponding information specified in SS-MWI.

This indication shall be confirmed and the Message Waiting Signal at the Served User's terminal, if any, shall be cancelled for that specific Message Type(s).

6.2.2.2.2 Update of Message Centre Information

Whenever the number of new and/or retrieved messages in a Mailbox changes, excluding the arrival of a New Message (e.g. the Served User has retrieved one or more of the new messages or has deleted one or more messages), the Message Centre shall inform the Served User by sending an updated list of all new and/or retrieved messages (i.e. update procedure). The update information shall include

- the address of the Message Centre;
- the address of the Served User;
- the Message Type of the messages for that specific update procedure;
- either Complete Information about New and/or Retrieved Messages;
- or Compressed Information about New and/or Retrieved Messages;
- or a mixture of both, e.g. Complete Information for New Messages and Compressed Information for Retrieved Messages as defined in the actual configuration of SS-MCM.

NOTE 1 The procedures for how the Served User retrieves the content of messages and how the Served User can delete messages in the Mailbox is out of the scope of this International Standard.

The update procedure shall be based on the Message Type. The information for the next Message Type shall only be transmitted after the update information for all new and/or retrieved messages of one specific Message Type has been completely transmitted to the Served User. Each update procedure shall be confirmed with an appropriate indication.

NOTE 2 The default style (Compressed or Complete Information), which is used for the update procedure of the various Message Type(s), is implementation dependent and will be pre-defined by the service provider.

At the end of the update procedure the Message Waiting Signal at the Served User's terminal, if available, shall be refreshed for the various Message Types.

6.2.2.2.3 Update request from the Served User

At any time the Served User can request the Message Centre to send update information for either all available message types or only for one specific Message Type. To request an update for a Mailbox at the MC the following information from the Served User shall be sent towards the MC:

- address of the Served User (i.e. Party Number);
- the Message Type(s) for which the Served User requests an update;
- optionally, the address of the Message Centre (e.g. Party Number).

After this request the Message Centre shall answer the Served User request with information about the status of the New Messages in the Served User's Mailbox of the requested Message Type(s). Depending on the presentation style (i.e. compressed or complete information), which is adopted in the current configuration for the New Messages, the MC shall provide the Served User with the following information:

a) Compressed Mode:

- Message Type for which the Served User has requested an update;
- optionally, the address of the Message Centre;
- optionally, the number of New Messages waiting for that specific Message Type;
- optionally, the priority of the latest highest priority New Message waiting for that specific Message Type;
- optionally, the address of the user that left the latest highest priority New Message;
- optionally, the time when the latest highest priority New Message was left.

b) Complete Mode:

- Message Type for which the Served User has requested an update;
- optionally, the number of New Messages waiting for that specific Message Type.

NOTE This structure is the same as the corresponding information specified in SS-MWI. After sending this information the MC shall start the update procedure as described in 6.2.2.2.2.

6.2.2.2.4 Mailbox – full indication

Whenever the Served User's Mailbox reaches its storing capacity (or a specific threshold value) for one or more Message Types, the MC may send a Mailbox-full indication for specific Message Types towards the Served User. The Mailbox-full indication shall be sent independently of all other monitoring procedures.

6.2.3 Exceptional procedures

6.2.3.1 Activation, deactivation and interrogation

The Served User shall get an appropriate error indication if

- the Served User wants to communicate with the MC but has no access from the service provider;
- a specific Message Type is requested by the Served User but not provided by the MC;

- a specific presentation style (i.e. compressed and/or complete information) for messages of a specific Message Type requested from the Served User is not provided by the MC.

6.2.3.2 Invocation and operation

The Served User shall get an appropriate error indication if

- the Served User wants to communicate with the MC but has no access from the service provider;
- a specific Message Type is requested by the Served User but not provided by the MC;
- a specific presentation style (i.e. compressed and/or complete information) for messages of a specific Message Type requested from the Served User is not provided by the MC.

6.3 Interactions with other Supplementary Services / Additional Network Features

Interactions with other supplementary services and ANFs for which PISN standards were available at the time of publication of this International Standard are specified below.

6.3.1 Calling Line Identification Presentation (SS-CLIP)

No interaction.

6.3.2 Connected Line Identification Presentation (SS-COLP)

No interaction.

6.3.3 Calling/Connected Line Identification Restriction (SS-CLIR)

No interaction.

6.3.4 Calling Name Identification Presentation (SS-CNIP)

No interaction.

6.3.5 Calling/Connected Name Identification Restriction (SS-CNIR)

No interaction.

6.3.6 Connected Name Identification Presentation (SS-CONP)

No interaction.

6.3.7 Call Forwarding Unconditional (SS-CFU)

No interaction.

6.3.8 Call Forwarding Busy (SS-CFB)

No interaction.

6.3.9 Call Forwarding No Reply (SS-CFNR)

No interaction.

6.3.10 Path Replacement (ANF-PR)

No interaction.

6.3.11 Call Transfer (SS-CT)

No interaction.

6.3.12 Call Deflection (SS-CD)

No interaction.

6.3.13 Completion of Calls to Busy Subscribers (SS-CCBS)

No interaction.

6.3.14 Completion of Calls on No Reply (SS-CCNR)

No interaction.

6.3.15 Call Offer (SS-CO)

No interaction.

6.3.16 Do Not Disturb (SS-DND)

No interaction.

6.3.17 Do Not Disturb Override (SS-DNDO)

No interaction.

6.3.18 Call Intrusion (SS-CI)

No interaction.

6.3.19 Advice of Charge (SS-AOC)

No interaction.

6.3.20 Recall (SS-RE)

No interaction.

6.3.21 Call Interception (SS-CINT)

No interaction.

6.3.22 Transit Counter (ANF-TC)

No interaction.

6.3.23 Route Restriction Class (ANF-RRC)

No interaction.

6.3.24 Message Waiting Indication (SS-MWI)

No interaction.

NOTE SS-MCM is based on SS-MWI and includes its entire functionality. The interoperability with SS-MWI is therefore guaranteed. Compared to SS-MWI, SS-MCM offers an enhanced functionality for monitoring status changes of messages stored in the Served User's Mailbox.

6.3.25 Wireless Terminal Location Registration (SS-WTLR)

No interaction.

6.3.26 Wireless Terminal Incoming Call (SS-WTMI)

No interaction.

6.3.27 Wireless Terminal Outgoing Call (SS-WTMO)

No interaction.

6.3.28 Wireless Terminal Authentication of a WTM User (SS-WTAT)

No interaction.

6.3.29 Wireless Terminal Authentication of the PISN (SS-WTAN)

No interaction.

6.3.30 Common Information (SS-CMN)

No interaction.

6.3.31 Call Priority Interruption (Protection) (SS-CPI(P))

No interaction.

6.3.32 Private User Mobility Incoming Call (ANF-PUMI)

No interaction.

6.3.33 Private User Mobility Outgoing Call (ANF-PUMO)

No interaction.

6.3.34 Private User Mobility Registration (SS-PUMR)

No interaction.

6.3.35 Single Step Call Transfer (SS-SSCT)

No interaction.

6.3.36 Simple Dialog (SS-SD)

No interaction.

6.3.37 Call Identification and Call Linkage (ANF-CIDL)

No interaction.

6.3.38 Short Message Service (SS-SMS)

No interaction.

6.3.39 Make Call Request (SS-MCR)

No interaction.

6.3.40 Mailbox Identification (SS-MID)

If SS-MID is used in conjunction with SS-MCM and if mailbox identification services offered by SS-MID fail, it is implementation dependent if the services of SS-MCM are executed. If authentication services offered by SS-MID fail, the activation, deactivation, interrogation and update request services of SS-MCM shall not be executed.

6.4 Interworking considerations

Interworking with other networks is optional, if the other network provides similar services.

6.5 Overall SDL

The Figure 1 contains the dynamic description of the SS-MCM activation, deactivation and interrogation procedures and Figure 2 contains the dynamic description of SS-MCM normal operation procedure using the Specification and Description Language (SDL) defined in ITU-T Rec. Z.100 (1999).

Input signals from the left and output signals to the left represent primitives from and to the Message Centre.

Input signals from the right and output signals to the right represent primitives from and to the Served User.

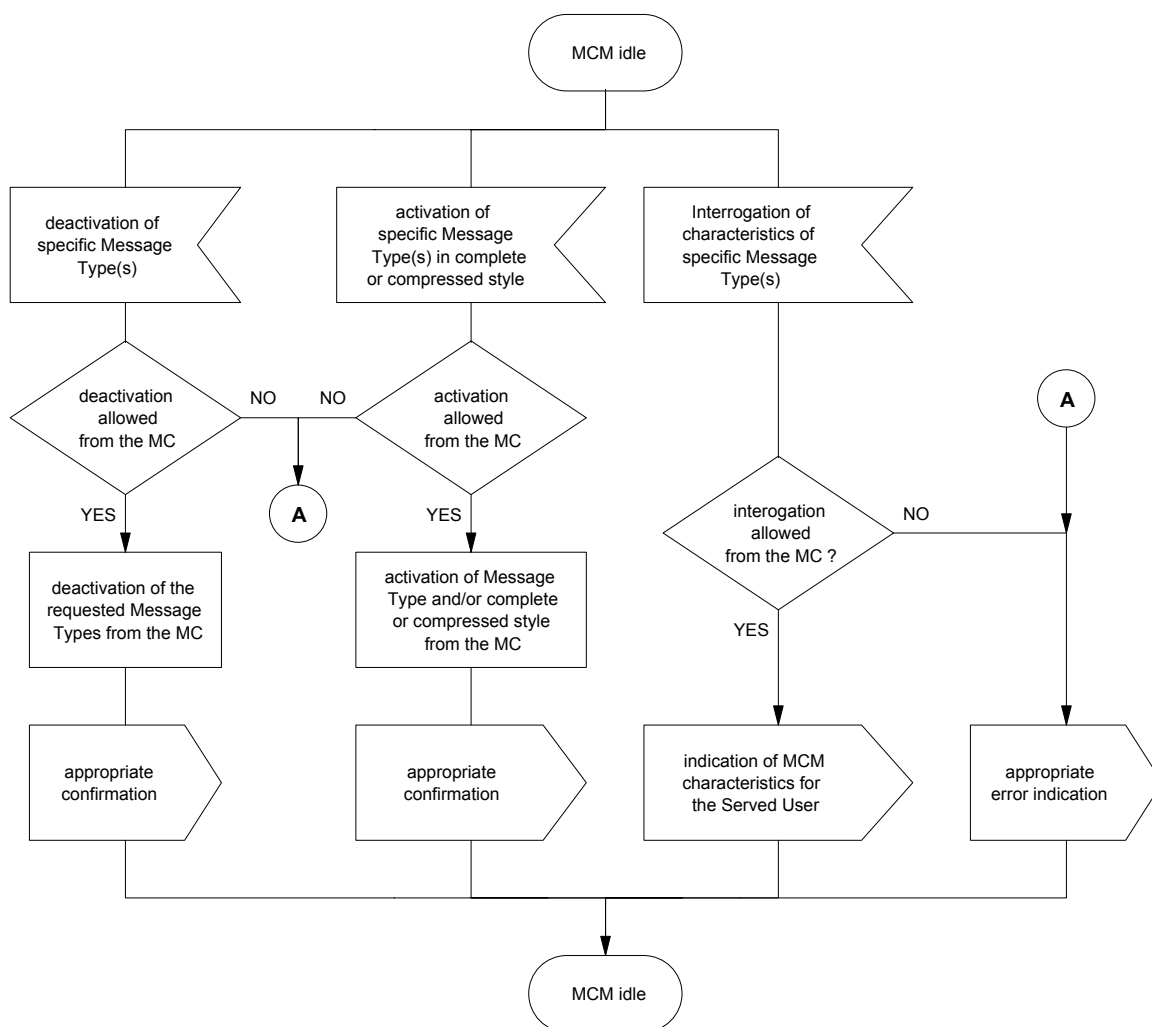


Figure 1 — SS-MCM Overall SDL: activation, deactivation and interrogation request

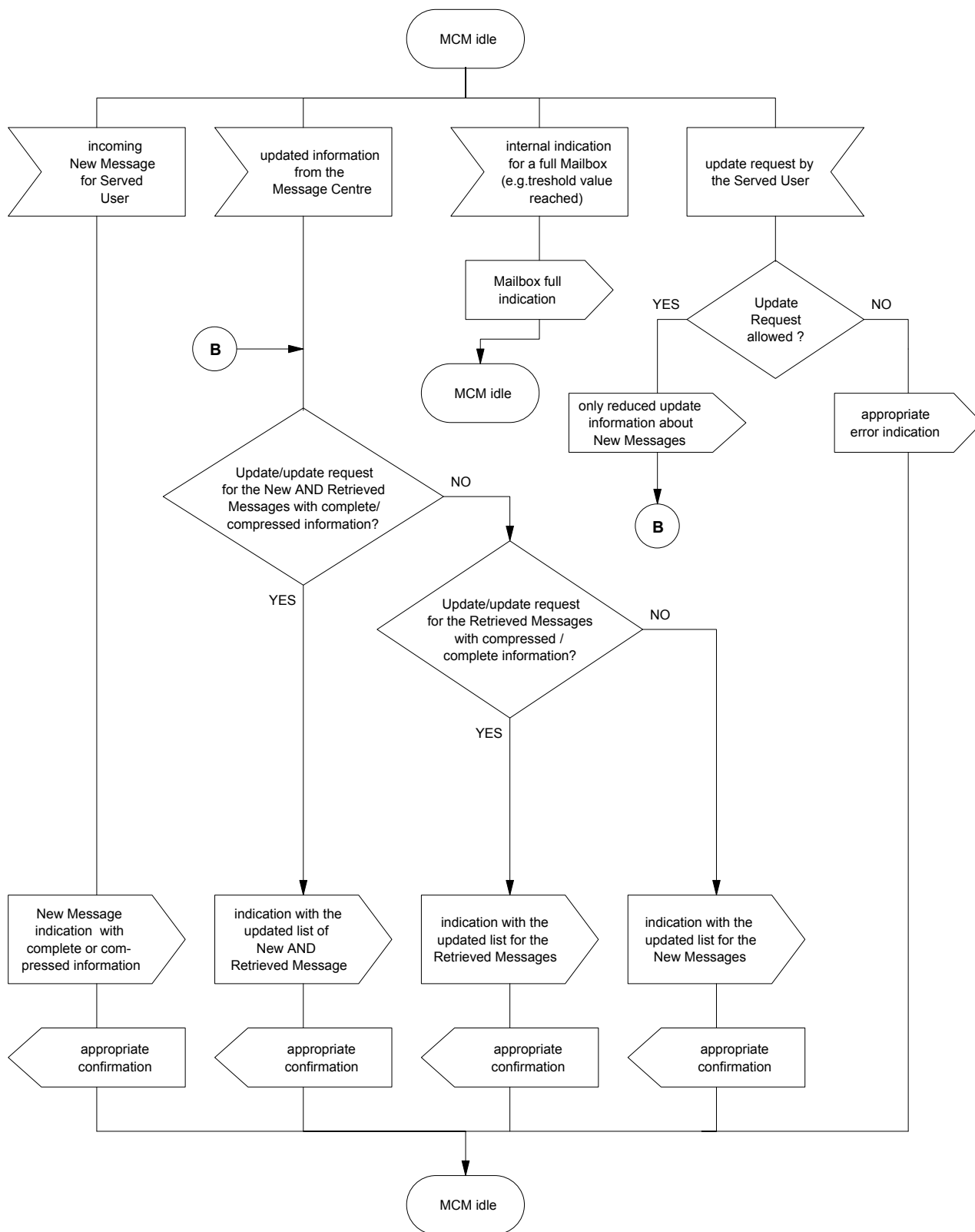


Figure 2 — SS-MCM Overall SDL: Arrival of a New Message at the MC, Update and Update Request procedure, Mailbox-full indication

7 SS-MID stage 1 specification

7.1 Description

7.1.1 General description

The supplementary service MID enables a Message Centre to identify a specific mailbox of a Served User in case that the Served User has more than one Mailbox within the Message Centre. In addition SS-MID enables a Served User to authenticate himself/herself at a specific Mailbox located within the Message Centre.

7.1.2 Qualifications on applicability to telecommunication services

This supplementary service does not apply directly to any basic telecommunication service.

7.2 Procedures

7.2.1 Provision / withdrawal

SS-MID may be provided or withdrawn after pre-arrangement with the service provider or may be generally available to all users.

7.2.2 Normal procedures

7.2.2.1 Activation, deactivation and interrogation

Not applicable.

7.2.2.2 Invocation and operation

7.2.2.2.1 Identification

In case the Served User has more than one mailbox at the MC, the MC shall identify a specific mailbox by sending the following mailbox identification data to the Served User:

- the address of the Message Centre where the Mailbox of the Served User is located;
- the address of the Served User;
- optionally, the Name of the Served User;
- the Served User's Mailbox identity (e.g. alphanumeric string).

The receipt of this information shall be confirmed with an appropriate indication to the MC.

7.2.2.2.2 Authentication

SS-MID enables a Served User to authenticate himself/herself at a specific Mailbox by sending the following address and authentication data to the MC:

- the address of the Message Centre where the Mailbox of the Served User is located;
- the address of the Served User;
- optionally, the Name of the Served User;

- optionally, a Served User's Mailbox identity (e.g. alphanumeric string);
- an authentication string (i.e. password) from the Served User to identify himself/herself at the Mailbox.

After a successful verification of the Served User's password the MC shall confirm this to the Served User with an appropriate indication.

All information shall be delivered between the Served User and the MC by using an already existing connection or by setting up a new call independent connection. Release of the call independent connection is the responsibility of its initiator.

7.2.3 Exceptional procedures

7.2.3.1 Activation, deactivation and interrogation

Not applicable.

7.2.3.2 Invocation and operation

If an invalid mailbox identity is received from the MC an appropriate error indication shall be sent towards the Message Centre.

If an invalid Served User password is received at the MC, the MC shall indicate the authentication failure by sending an appropriate error indication towards the Served User.

7.3 Interactions with other Supplementary Services / Additional Network Features

Interactions with other supplementary services and ANFs for which PISN standards were available at the time of publication of this International Standard are specified below.

7.3.1 Calling Line Identification Presentation (SS-CLIP)

No interaction.

7.3.2 Connected Line Identification Presentation (SS-COLP)

No interaction.

7.3.3 Calling/Connected Line Identification Restriction (SS-CLIR)

No interaction.

7.3.4 Calling Name Identification Presentation (SS-CNIP)

No interaction.

7.3.5 Calling/Connected Name Identification Restriction (SS-CNIR)

No interaction.

7.3.6 Connected Name Identification Presentation (SS-CONP)

No interaction.

7.3.7 Call Forwarding Unconditional (SS-CFU)

No interaction.

7.3.8 Call Forwarding Busy (SS-CFB)

No interaction.

7.3.9 Call Forwarding No Reply (SS-CFNR)

No interaction.

7.3.10 Path Replacement (ANF-PR)

No interaction.

7.3.11 Call Transfer (SS-CT)

No interaction.

7.3.12 Call Deflection (SS-CD)

No interaction.

7.3.13 Completion of Calls to Busy Subscribers (SS-CCBS)

No interaction.

7.3.14 Completion of Calls on No Reply (SS-CCNR)

No interaction.

7.3.15 Call Offer (SS-CO)

No interaction.

7.3.16 Do Not Disturb (SS-DND)

No interaction.

7.3.17 Do Not Disturb Override (SS-DNDO)

No interaction.

7.3.18 Call Intrusion (SS-CI)

No interaction.

7.3.19 Advice of Charge (SS-AOC)

No interaction.

7.3.20 Recall (SS-RE)

No interaction.

7.3.21 Call Interception (SS-CINT)

No interaction.

7.3.22 Transit Counter (ANF-TC)

No interaction.

7.3.23 Route Restriction Class (ANF-RRC)

No interaction.

7.3.24 Message Waiting Indication (SS-MWI)

No interaction.

7.3.25 Wireless Terminal Location Registration (SS-WTLR)

No interaction.

7.3.26 Wireless Terminal Incoming Call (SS-WTMI)

No interaction.

7.3.27 Wireless Terminal Outgoing Call (SS-WTMO)

No interaction.

7.3.28 Wireless Terminal Authentication of a WTM User (SS-WTAT)

No interaction.

7.3.29 Wireless Terminal Authentication of the PISN (SS-WTAN)

No interaction.

7.3.30 Common Information (SS-CMN)

No interaction.

7.3.31 Call Priority Interruption (Protection) (SS-CPI(P))

No interaction.

7.3.32 Private User Mobility Incoming Call (ANF-PUMI)

No interaction.

7.3.33 Private User Mobility Outgoing Call (ANF-PUMO)

No interaction.

7.3.34 Private User Mobility Registration (SS-PUMR)

No interaction.

7.3.35 Single Step Call Transfer (SS-SSCT)

No interaction.

7.3.36 Simple Dialog (SS-SD)

No interaction.

7.3.37 Call Identification and Call Linkage (ANF-CIDL)

No interaction.

7.3.38 Short Message Service (SS-SMS)

No interaction.

7.3.39 Make Call Request (SS-MCR)

No interaction.

7.3.40 Message Centre Monitoring (SS-MCM)

If SS-MID is used in conjunction with SS-MCM and if mailbox identification services offered by SS-MID fail, it is implementation dependent if the services of SS-MCM are executed. If authentication services offered by SS-MID fail, the activation, deactivation, interrogation and update request services of SS-MCM shall not be executed.

7.4 Interworking considerations

Interworking with other networks is optional, if the other network provides similar services.

7.5 Overall SDL

Figure 3 contains the dynamic description of SS-MID using the Specification and Description Language (SDL) defined in ITU-T Rec. Z.100 (1999). The SDL process represents the behaviour of the network in providing SS-MID.

Input signals from the left and output signals to the left represent primitives from and to the Message Centre.

Input signals from the right and output signals to the right represent primitives from and to the Served User.

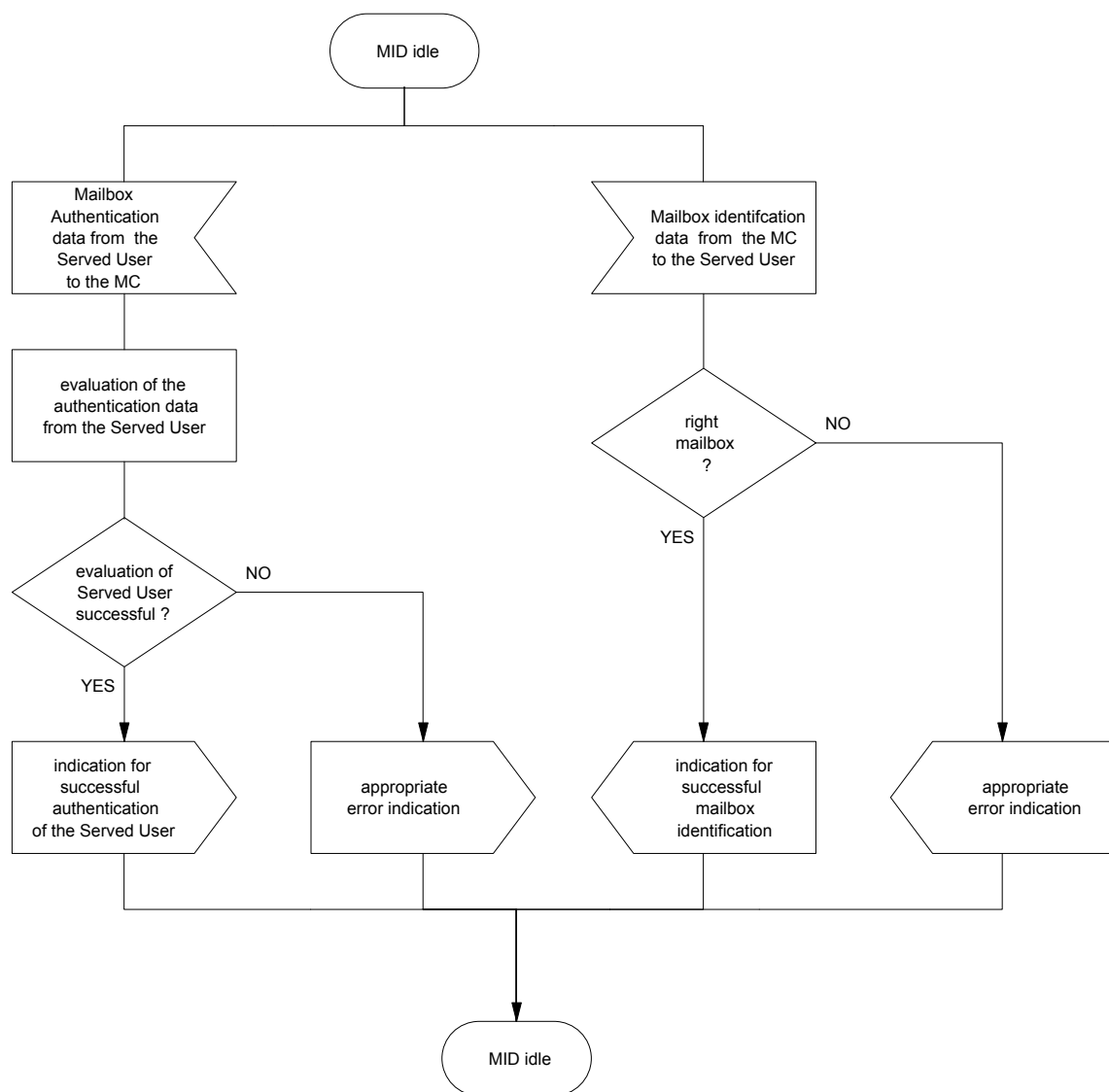


Figure 3 — SS-MID Overall SDL

8 SS-MCM stage 2 specification

8.1 Functional model

8.1.1 Functional model description

The functional model shall comprise the following Functional Entities (FEs):

FE1 Message Centre's control entity;

FE2 Served User's control entity;

FE3 Served User Agent.

The following relationship shall exist between these FEs:

ra between FE1 and FE2;

rb between FE2 and FE3.

Figure 4 shows these FEs and this relationship.

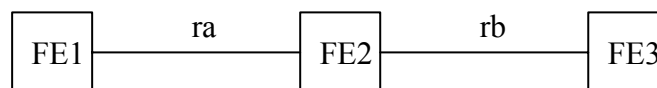


Figure 4 — Functional model for SS-MCM

8.1.2 Description of Functional Entities

8.1.2.1 Message Centre's control entity, FE1

This Functional Entity:

- receives an activation, deactivation and / or interrogation request from FE2;
- sends a New Message indication to FE2;
- sends updated information about New Messages and/or Retrieved Messages to FE2;
- receives a Served User request for updated Mailbox information from FE2;
- sends the Mailbox-full indication to FE2.

8.1.2.2 Served User's control entity, FE2

This Functional Entity:

- receives an activation, deactivation and / or interrogation request from FE3 and sends this request to FE1;
- receives an indication about the arrival of a New Message from FE1 and sends this New Message indication to FE3;

- receives updated information about New Message and / or Retrieved Messages stored at the Served User's Mailbox from FE1 and sends this updated information to FE3;
- receives a request for updated Mailbox information from FE3 and sends this request to FE1;
- receives a Mailbox-full indication from FE1 and send this Mailbox-full indication to FE3.

8.1.2.3 Served User Agent, FE3

This Functional Entity:

- sends an activation, deactivation and / or interrogation request to FE2;
- receives an indication about the arrival of a New Message in the Served User's Mailbox from FE2;
- receives updated information about New Message and/or Retrieved Messages stored at the Served User's Mailbox from the FE2;
- sends a request for updated Mailbox information to FE2;
- receives a Mailbox-full indication from FE2.

8.2 Information flows

8.2.1 Definition of information flows

In the tables listing the elements in information flows, the column headed "Request" indicates which of these elements are mandatory (M) and which are optional (O) in a request/indication information flow, and the column headed "Confirm" (confirmed information flows only) indicates which of these elements are mandatory (M) and which are optional (O) in a response/confirmation information flow.

The information flows across rb represent information flows between two functional entities FE2 and FE3. If FE3 is controlled by or resides in FE2 (e.g. stimulus terminal), the information flows across rb are outside the scope of this International Standard.

8.2.1.1 MCM_ServiceChange

MCM_ServiceChange is a confirmed information flow across rb from FE3 to FE2 and across ra from FE2 to FE1 used by the Served User to activate or deactivate monitoring of one or more predefined Message Types.

Table 1 lists the elements within the MCM_ServiceChange information flow.

Table 1 — Content of MCM_ServiceChange

Element	Request		Confirm	NOTE
	activation	deactivation		
Served User identity	M	M		1
Message Centre identity	M	M		2
List of Message Types	M	M		3
Presentation style of the New Message information	O	—		4
Presentation style of the Retrieved Message information	O	—		5
Result			M	6

NOTE 1 This is the Served User's Party Number (e.g. PISN number).

NOTE 2 This element identifies the Message Centre (e.g. PISN number).

NOTE 3 This indicates one or more Message Types (e.g. speech, email, fax) which shall be activated or deactivated.

NOTE 4 This is an indication whether compressed information or complete information shall be presented to the Served User for the New Messages. If this element is not present the presentation style shall be used as defined in the default configuration.

NOTE 5 This is an indication whether compressed information or complete information shall be presented to the Served User for the Retrieved Messages. If this element is not present the presentation style shall be used as defined in the default configuration.

NOTE 6 This indicates acceptance or the reason for rejection.

8.2.1.2 MCM_Interrogate

MCM_Interrogate is a confirmed information flow across rb from FE3 to FE2 and across ra from FE2 to FE1 used by the Served User to interrogate the properties and configuration parameters for a specific Message Type .

Table 2 lists the elements within the MCM_Interrogate information flow.

Table 2 — Content of MCM_Interrogate

Element	Request	Confirm	NOTE
Served User identity	M		1
Message Centre identity	M		2
Message Type or List of Message Types	M	M	3
Information about the Message Type or List of Message Types	—	O	4
Result		M	5

NOTE 1 This is the Served User's identity (e.g. PISN number).

NOTE 2 This element identifies the Message Centre (e.g. PISN number).

NOTE 3 This is a specific Message Type (e.g. speech, email, fax) or a List of Message Types for which the Served User requests information about the predefined configuration.

NOTE 4 This element gives information to the Served User whether the interrogated Message Type is supported with compressed information and/or complete information for New and/or Retrieved Messages.

NOTE 5 This indicates acceptance or the reason for rejection.

8.2.1.3 MCM_NewMessage

MCM_NewMessage is a confirmed information flow across ra from FE1 to FE2 and across rb from FE2 to FE3 used to indicate the arrival of a New Message in the Mailbox of the Served User. The information flow request has different elements depending whether complete information or compressed information is provided.

NOTE This information flow includes the same elements as the information flow ra_MWI_Activate in SS-MWI.

Table 3 lists the elements within the MCM_NewMessage information flow.

Table 3 — Content of MCM_NewMessage

Element	Request	Confirm	NOTE	
			compressed information	Complete information
Served User identity	M		1	1
Message Type	M		2	2
Number of Messages	O		3	3
Priority	O		4a	4b
Message Centre identity	O		5	5
Originating number	O		6a	6b
Timestamp	O		7a	7b
Result		M	8	8

NOTE 1 This is the Served User's Party Number (e.g. PISN number).

NOTE 2 This indicates the specific Message Type of the New Message (e.g. speech, email, fax).

NOTE 3 This indicates the total number of New Messages of a particular Message Type which are stored in the Mailbox of the Served User.

NOTE 4a This indicates the priority value for the highest priority among all New Messages stored in the Mailbox of a particular Message Type.

NOTE 4b This indicates the priority value of a specific message which was left at the Message Centre.

NOTE 5 This element identifies the Message Centre (e.g. PISN number).

NOTE 6a This indicates the Party Number of the Originator that left the New Message with the highest priority value.

NOTE 6b This indicates the Party Number of the Originator that left the New Message.

NOTE 7a This is the time stamp for the incoming of the highest priority New Message of a particular Message Type within the Mailbox.

NOTE 7b This indicates the time when a message was left.

NOTE 8 This indicates acceptance or the reason for rejection.

8.2.1.4 MCM_NoNewMessage

MCM_NoNewMessage is a confirmed information flow across ra from FE1 to FE2 and across rb from FE2 to FE3 used to indicate that there is no more New Message of a specific Message Type in the Mailbox of the Served User.

NOTE This information flow includes the same elements as the information flow ra_MWI_Deactivate in SS-MWI.

Table 4 lists the elements within the MCM_NoNewMessage information flow.

Table 4 — Content of MCM_NoNewMessage

Element	Request	Confirm	NOTE
Served User identity	M		1
Message Type	M		2
Message Centre identity	O		3
Result		M	4

NOTE 1 This is the Served User's Party Number (e.g. PISN number).

NOTE 2 This is the specific Message Type of the New Message (e.g. speech, email, fax).

NOTE 3 This element identifies the Message Centre (e.g. PISN number).

NOTE 4 This indicates acceptance or reason for rejection.

8.2.1.5 MCM_UpdateInfo

MCM_UpdateInfo is a confirmed information flow across ra from FE1 to FE2 and across rb from FE2 to FE3 used to update the information about New Messages and/or Retrieved Messages.

Table 5 lists the elements within the MCM_UpdateInfo information flow.

Table 5 — Content of MCM_UpdateInfo

Element	Request		Confirm	NOTE
	compressed information	Complete information		
Served User identity	M	M		1
Message Centre identity	M	M		2
Message Type	M	M		3
List of Originator addresses of all New and/or Retrieved Messages of that Message Type	—	M		4
Number of all New and/or Retrieved Messages of that Message Type	M	—		5
Priority	O	O		6
Timestamp	O	O		7
Result			M	8

NOTE 1 This is the Served User's Party Number (e.g. PISN number).

NOTE 2 This element identifies the Message Centre (e.g. PISN number).

NOTE 3 This indicates a particular Message Type (e.g. speech, email, fax).

NOTE 4 This indicates the Party Number of the Originator that left a message. Not applicable in the case that the Originator address is an email address. The information element is mandatory for complete information but shall not be used in the compressed information scenario.

NOTE 5 This indicates the total number of New Messages of a specific Message Type, which are stored in the Mailbox of the Served User.

NOTE 6 This indicates a list of the priority of all New and/or Retrieved Messages which were left at the Message Centre. When the compressed information style is used, this is the value for the highest priority among all New and/or Retrieved Messages stored in the Mailbox of that particular Message Type.

NOTE 7 This indicates a list of the time stamp when the New and/or Retrieved Messages were left. When the compressed information style is used, this is the timestamp for incoming New and/or Retrieved Message with the highest priority of that particular Message Type within the Mailbox.

NOTE 8 This indicates acceptance or the reason for rejection.

8.2.1.6 MCM_UpdateReq

MCM_UpdateReq is a confirmed information flow across rb from FE3 to FE2 and across ra from FE2 to FE1 used by the Served User to request updated information about New Messages and/or Retrieved Messages.

NOTE This information flow includes the same elements as the information flow ra_MWI_Interrogate in SS-MWI.

Table 6 lists the elements within the MCM_UpdateReq information flow.

Table 6 — Content of MCM_UpdateReq

Element	Request	Confirm		NOTE
		compressed information	complete information	
Served User identity	M			1
Message Type	M	M	M	2
Number of messages	—	O	O	3
Priority	—	O	—	4
Message Centre identity	O	O	O	5
Originating Number	—	O	—	6
Timestamp	—	O	—	7
Result		M	M	8

NOTE 1 This is the Served User's Party Number (e.g. PISN number).

NOTE 2 This indicates the specific Message Type of the New Message (e.g. speech, email, fax).

NOTE 3 This indicates the total number of New Messages of a particular Message Type which are stored in the Mailbox of the Served User.

NOTE 4 This indicates the priority value for the highest priority among all New Messages stored in the Mailbox of a particular Message Type.

NOTE 5 This element identifies the Message Centre (e.g. PISN number).

NOTE 6 This indicates the Party Number of the Originator that left the New Message with the highest priority value.

NOTE 7 This is the time stamp for the incoming of the highest priority New Message of a particular Message Type within the Mailbox.

NOTE 8 This indicates acceptance or the reason for rejection.

8.2.1.7 MCM_Mailbox_full

MCM_Mailbox_full is an unconfirmed information flow across ra from FE1 to FE2 and across rb from FE3 to FE2 used by the Message Centre to give an indication to the Served User that his/her Mailbox has reached the maximum storage capacity for messages of a specific Message Type.

Table 7 lists the elements within the MCM_Mailbox_full information flow.

Table 7 — Content of MCM_Mailbox_full

Element	Request	NOTE
Served User identity	M	1
Message Centre identity	M	2
Message Type	M	3

NOTE 1 This is the Served User's number (e.g. PISN number).

NOTE 2 This element identifies the Message Centre (e.g. PISN number).

NOTE 3 This indicates a particular Message Type (e.g. speech, email, fax).

8.2.2 Information flow sequences

A stage 3 standard for SS-MCM shall provide signalling procedures in support of the information flow sequences specified below. In addition, signalling procedures should be provided to cover other sequences arising from error situations, interactions with Basic Call, interactions with other supplementary services, different topologies, etc.

The following abbreviations are used:

req request;
ind indication;
resp response;
conf confirm.

8.2.2.1 Service Change procedures of SS-MCM

Figure 5 shows in generic form the information flow sequence for activation and/or deactivation of SS-MCM.

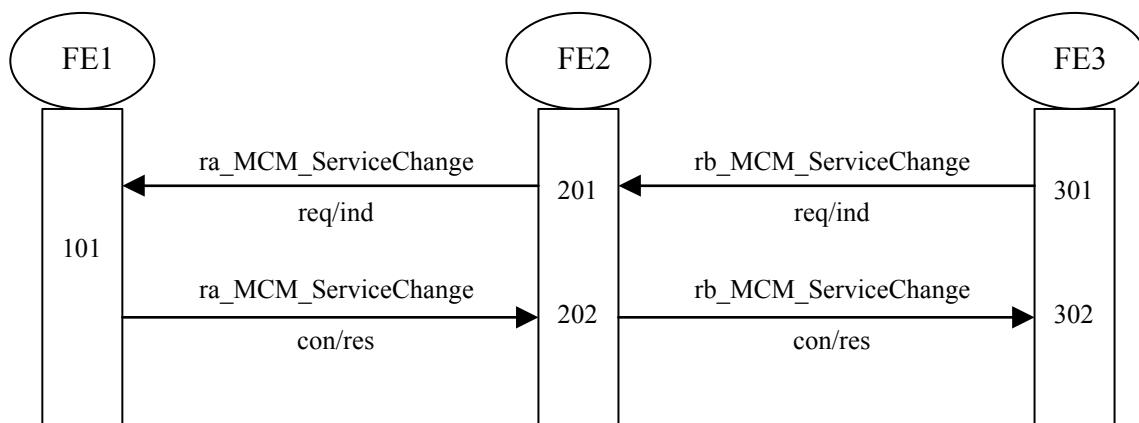


Figure 5 — Information flow sequence for activation and deactivation of SS-MCM

8.2.2.2 Interrogation procedure of SS-MCM

Figure 6 shows in generic form the information flow sequence for interrogation of SS-MCM.

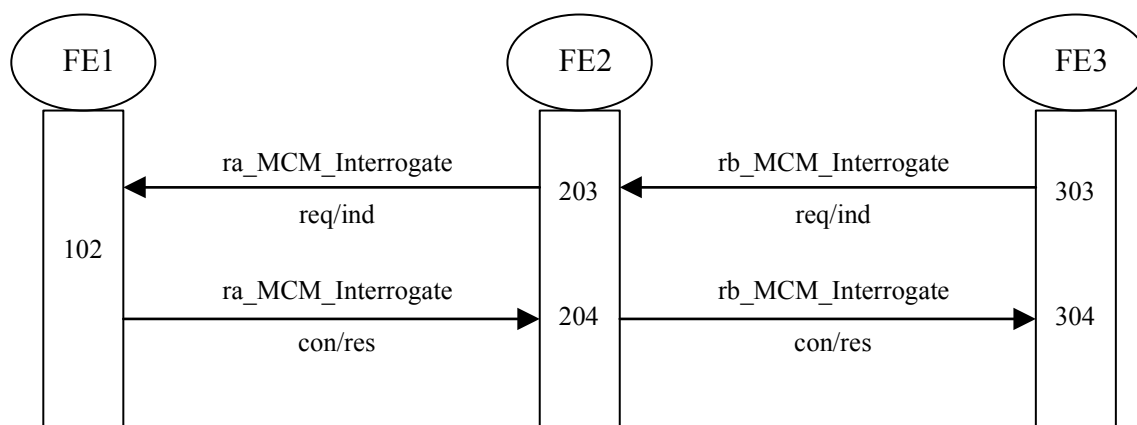


Figure 6 — Information flow sequence for interrogation of SS-MCM

8.2.2.3 Transmission of a NewMessage Indication

Figure 7 shows in generic form the information flow sequence for transmission of a NewMessage indication within SS-MCM.

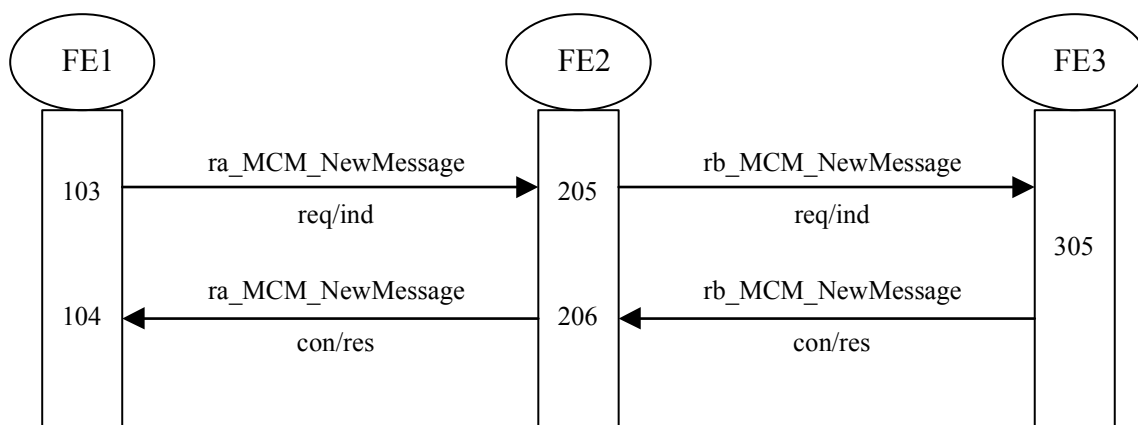


Figure 7 — Information flow sequence for transmission of a NewMessage indication

8.2.2.4 Transmission of a NoNewMessage Indication

Figure 8 shows in generic form the information flow sequence for transmission of a NoNewMessage indication within SS-MCM.

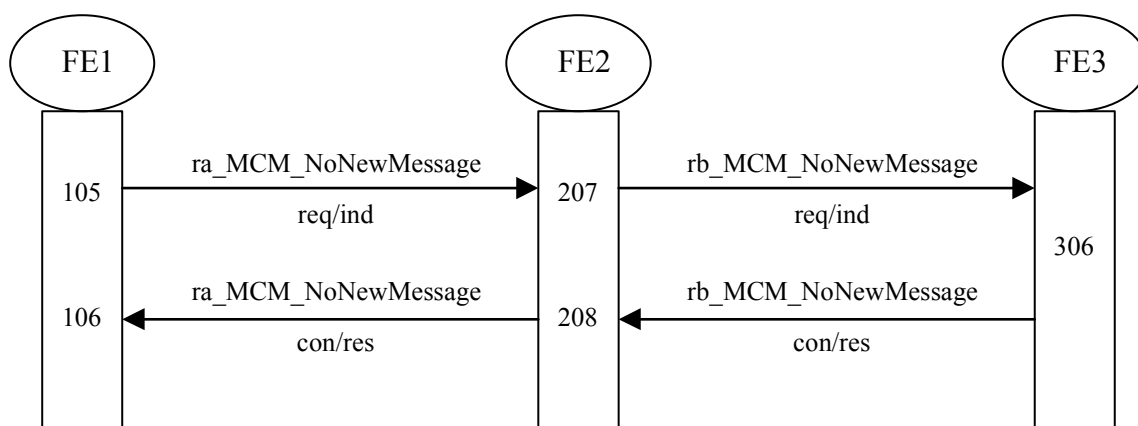


Figure 8 — Information flow sequence for transmission of a NoNewMessage indication

8.2.2.5 Transmission of Update Information

Figure 9 shows in generic form the information flow sequence for transmission of Update Information.

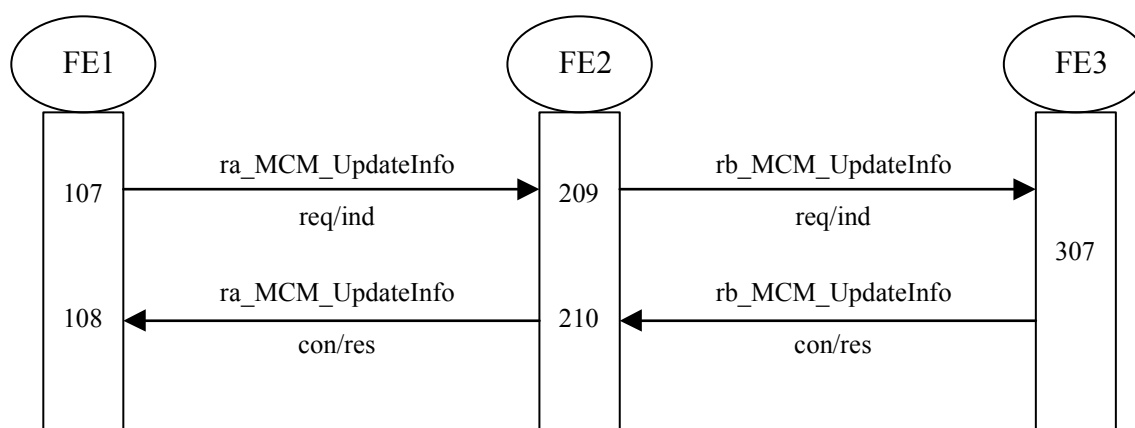


Figure 9 — Information flow sequence for transmission of update information

8.2.2.6 Transmission of an Update Request

Figure 10 shows in generic form the information flow sequence for transmission of an Update Request.

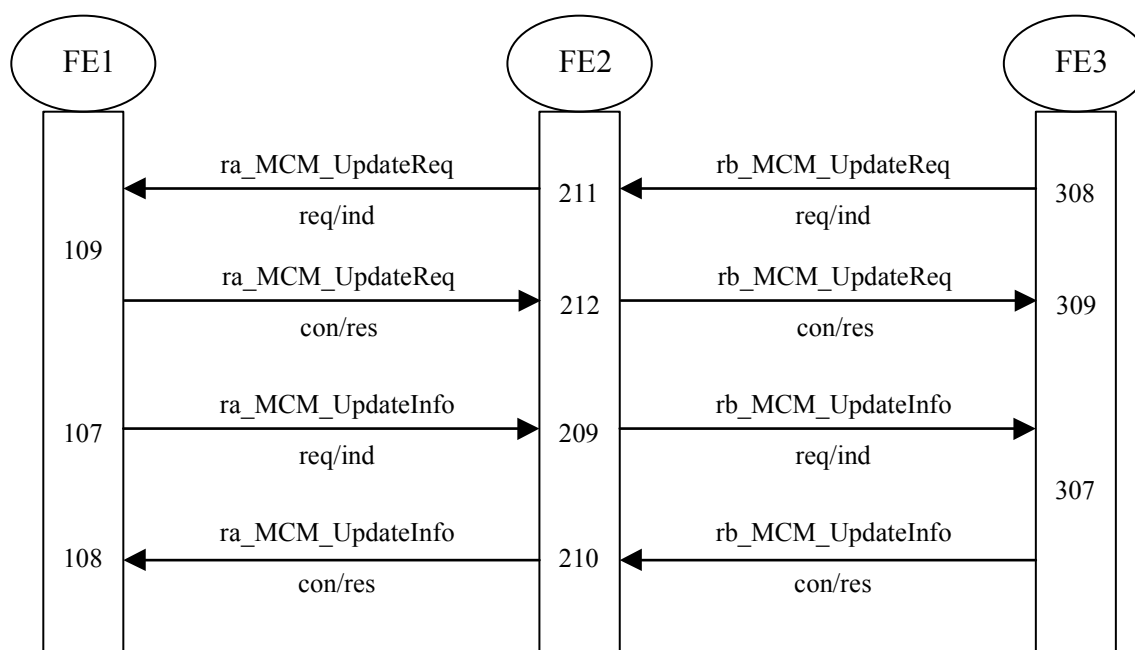


Figure 10 — Information flow sequence for transmission of an update request

8.2.2.7 Transmission of a Mailbox-full indication

Figure 11 shows in generic form the information flow sequence for transmission of a Mailbox-full indication.

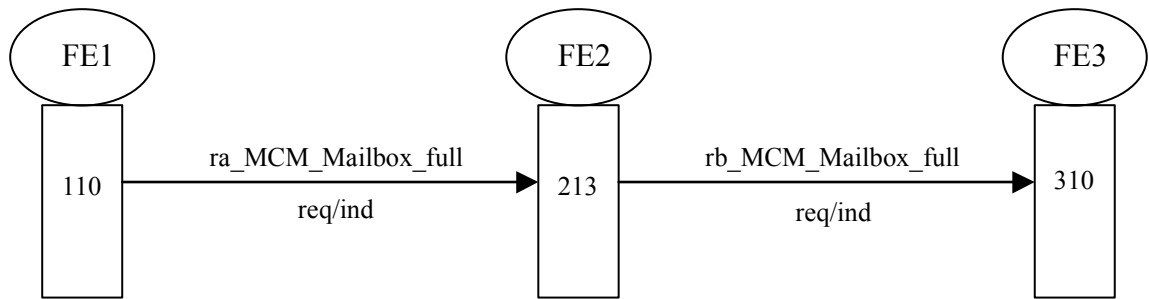


Figure 11 — Information flow sequence for transmission of a Mailbox-full indication

8.3 Functional Entity actions

8.3.1 Functional Entity actions of FE1

- 101 receives ra_MCM_ServiceChange req/ind from FE2 indicating the Message Type(s) which shall be activated or deactivated and sends ra_MCM_ServiceChange con/res after processing the request;
- 102 receives ra_MCM_Interrogate req/ind from FE2 with an interrogation request and sends ra_MCM_Interrogate con/res including the information requested by the interrogation;
- 103 sends ra_MCM_NewMessage req/ind to FE2 in order to indicate the arrival of a New Message;
- 104 receives ra_MCM_NewMessage con/res from FE2;
- 105 sends ra_MCM_NoNewMessage req/ind to FE2 in order to indicate that no more New Messages of a specific Message Type are in the Served User's mailbox;
- 106 receives ra_MCM_NoNewMessage con/res from FE2;
- 107 sends ra_MCM_UpdateInfo req/ind to FE2 with updated Mailbox information due to changes in the Served user's Mailbox or due to an update request from the Served User;
- 108 receives ra_MCM_UpdateInfo con/res from FE2;
- 109 receives ra_MCM_UpdateReq req/ind from FE2 conveying the Served User request for updated information and sends ra_MCM_UpdateReq con/res with updated information about New Messages to FE2;
- 110 sends ra_MCM_Mailbox_full req/ind to FE2 in order to indicate that the Mailbox reached its storage capacity.

8.3.2 Functional Entity actions of FE2

- 201 receives rb_MCM_ServiceChange req/ind from FE3 and sends ra_MCM_ServiceChange req/ind to FE1 in order to activate or deactivate specific Message Type(s);
- 202 receives ra_MCM_ServiceChange con/res from FE1 and sends rb_MCM_ServiceChange con/res to FE3;
- 203 receives rb_MCM_Interrogate req/ind from FE3 and sends ra_MCM_Interrogate req/ind with the interrogation request to FE1;

- 204 receives ra_MCM_Interrogate con/res from FE1 and sends rb_MCM_Interrogate con/res with the information requested by the interrogation to FE3;
- 205 receives ra_MCM_NewMessage req/ind from FE1 and sends rb_MCM_NewMessage req/ind to FE3 indicating the arrival of a New Message in the Mailbox;
- 206 receives rb_MCM_NewMessage con/res from FE3 and sends ra_MCM_NewMessage con/res to FE1;
- 207 receives ra_MCM_NoNewMessage req/ind from FE1 and sends rb_MCM_NoNewMessage req/ind to FE3 indicating that there are no more New Messages of a specific Message Type in the Mailbox;
- 208 receives rb_MCM_NoNewMessage con/res from FE3 and sends ra_MCM_NoNewMessage con/res to FE1;
- 209 receives ra_MCM_UpdateInfo req/ind from FE1 and sends rb_MCM_UpdateInfo req/ind to FE3 with updated Mailbox information due to changes in the Served User's Mailbox or due to an update request from the Served User;
- 210 receives rb_MCM_UpdateInfo con/res from FE3 and sends ra_MCM_UpdateInfo con/res to FE1;
- 211 receives rb_MCM_UpdateReq req/ind from FE3 and sends ra_MCM_UpdateReq req/ind to FE1;
- 212 receives ra_MCM_UpdateReq con/res from FE1 and sends rb_MCM_UpdateReq con/res to FE3;
- 213 receives ra_MCM_Mailbox_full req/ind from FE1 and sends rb_MCM_Mailbox_full req/ind to FE3 indicating that the Mailbox reached its storage capacity.

8.3.3 Functional Entity actions of FE3

- 301 sends rb_MCM_ServiceChange req/ind to FE2 in order to activate or deactivate specific Message Type(s);
- 302 receives rb_MCM_ServiceChange con/res from FE2;
- 303 sends rb_MCM_Interrogate req/ind with an interrogation request to FE2;
- 304 receives rb_MCM_Interrogate con/res from FE2 with the information requested by the interrogation;
- 305 receives rb_MCM_NewMessage req/ind from FE2 indicating the arrival of a New Message in the Mailbox and sends rb_MCM_NewMessage con/res to FE2;
- 306 receives rb_MCM_NoNewMessage req/ind from FE2 indicating that there are no more New Messages of a specific Message Type in the Mailbox and sends rb_MCM_NoNewMessage con/res to FE2;
- 307 receives rb_MCM_UpdateInfo req/ind from FE2 with updated Mailbox information due to changes in the Served User's Mailbox or due to an update request from the Served User and sends rb_MCM_UpdateInfo con/res to FE2;
- 308 sends rb_MCM_UpdateReq req/ind to FE2 conveying Served User's request for updated mailbox information;
- 309 receives rb_MCM_UpdateReq con/res from FE2 conveying updated mailbox information about New Messages;

310 receives rb_MCM_Mailbox_full req/ind from FE2 indicating that the Mailbox reached its storage capacity.

8.4 Functional Entity behaviour

The FE behaviours shown below are intended to illustrate typical FE behaviour in terms of information flows sent and received. The behaviour of each FE is shown using the Specification and Description Language (SDL) defined in IUT-T Rec. Z.100 (1999).

8.4.1 Behaviour of FE1

Figure 12 shows the normal behaviour of FE1. Output signals to the right and input signals from the right represent information flows to and from FE2. Input signals from the left represent indications from the Message Centre.

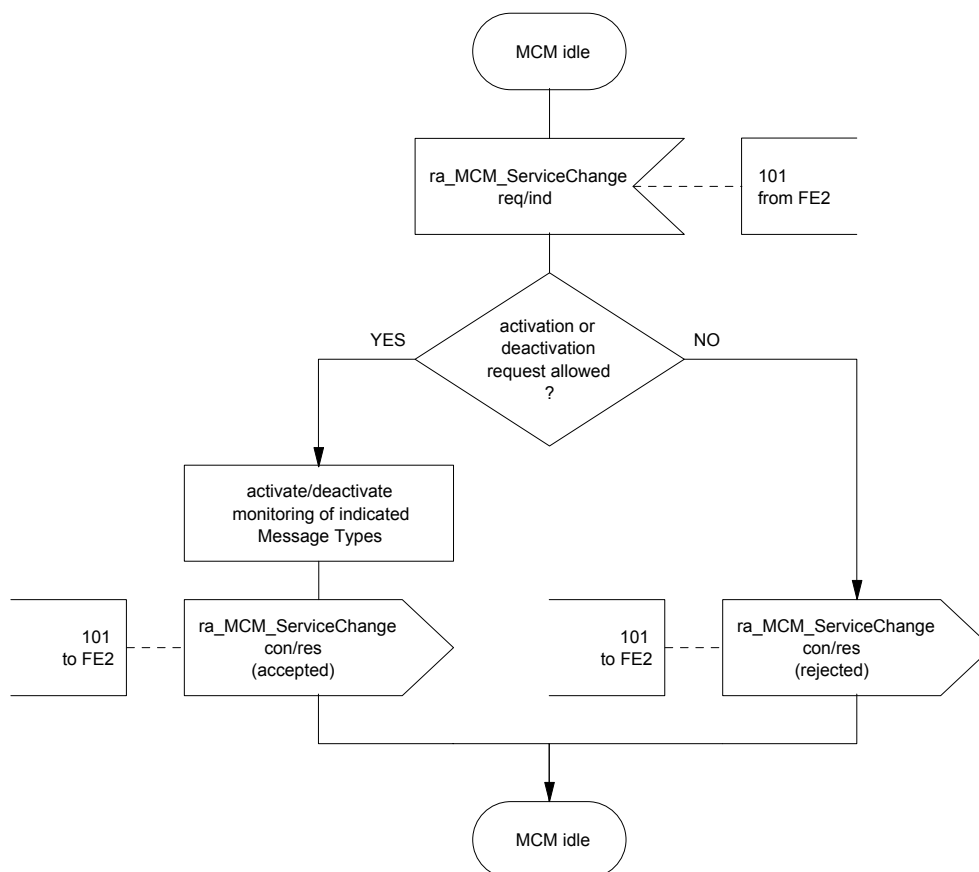


Figure 12a — SDL for MCM Service Change Procedures for FE1, Message Centre's control entity

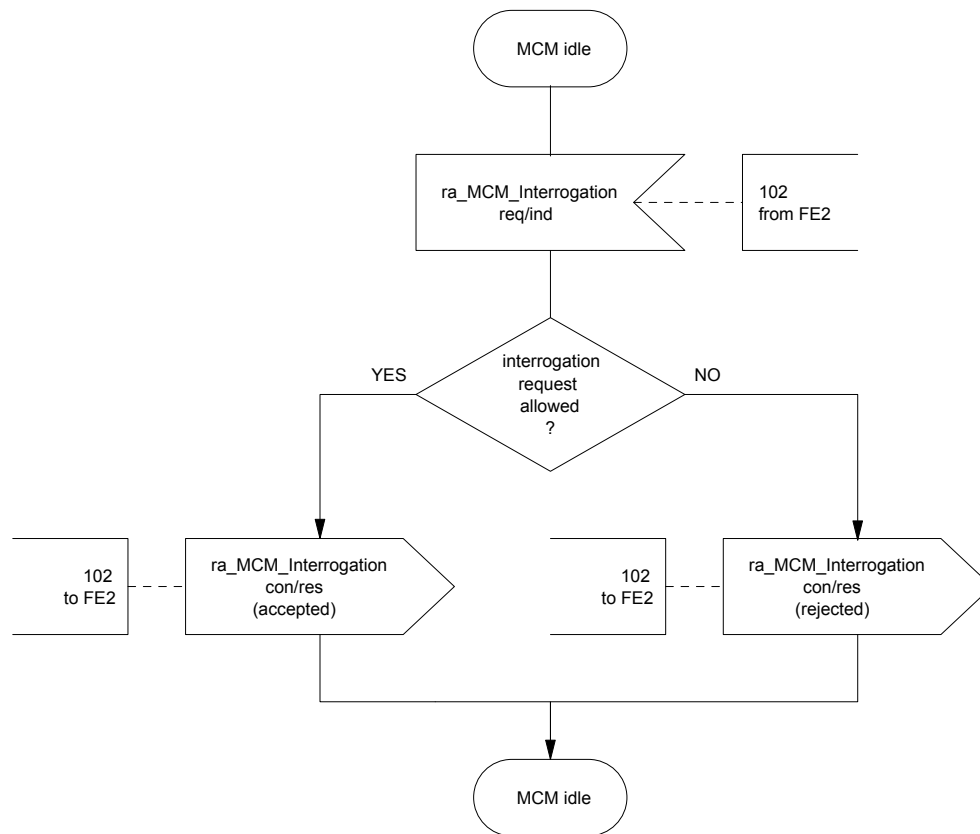


Figure 12b — SDL for MCM Interrogation Request for FE1, Message Centre's control entity

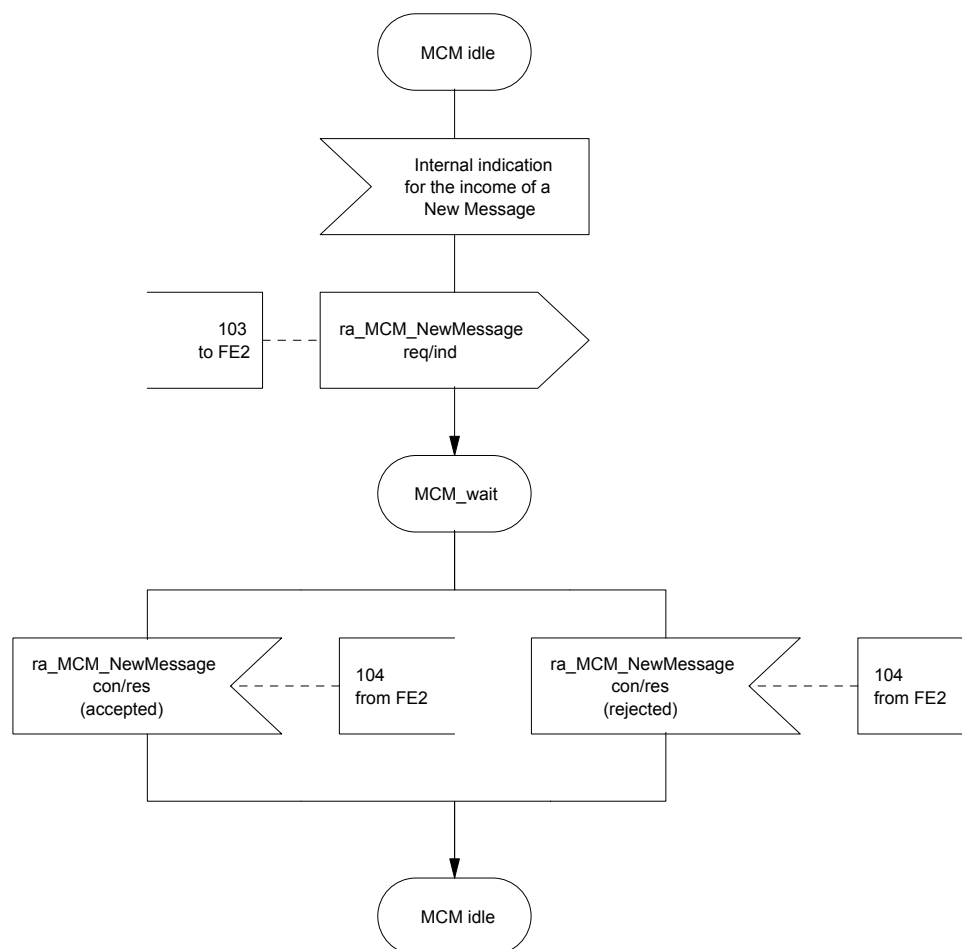


Figure 12c — SDL for MCM NewMessage Indication for FE1, Message Centre's control entity

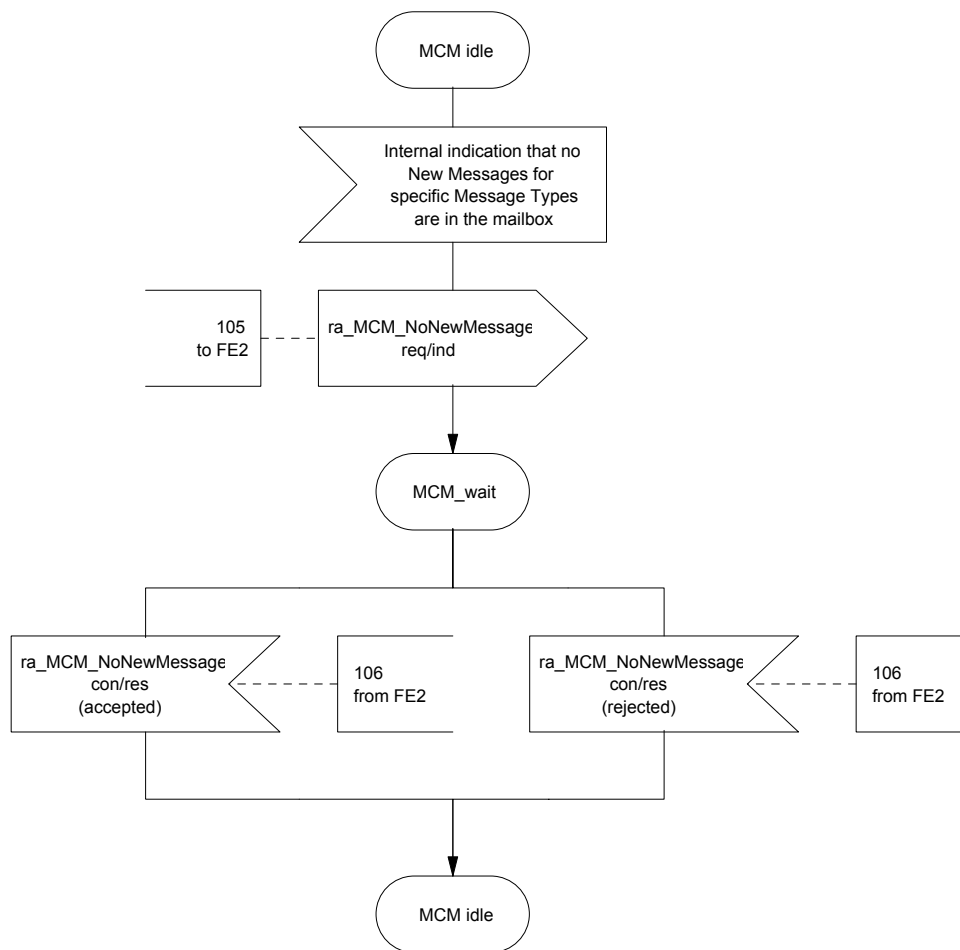


Figure 12d — SDL for MCM NoNewMessage Indication for FE1, Message Centre's control entity

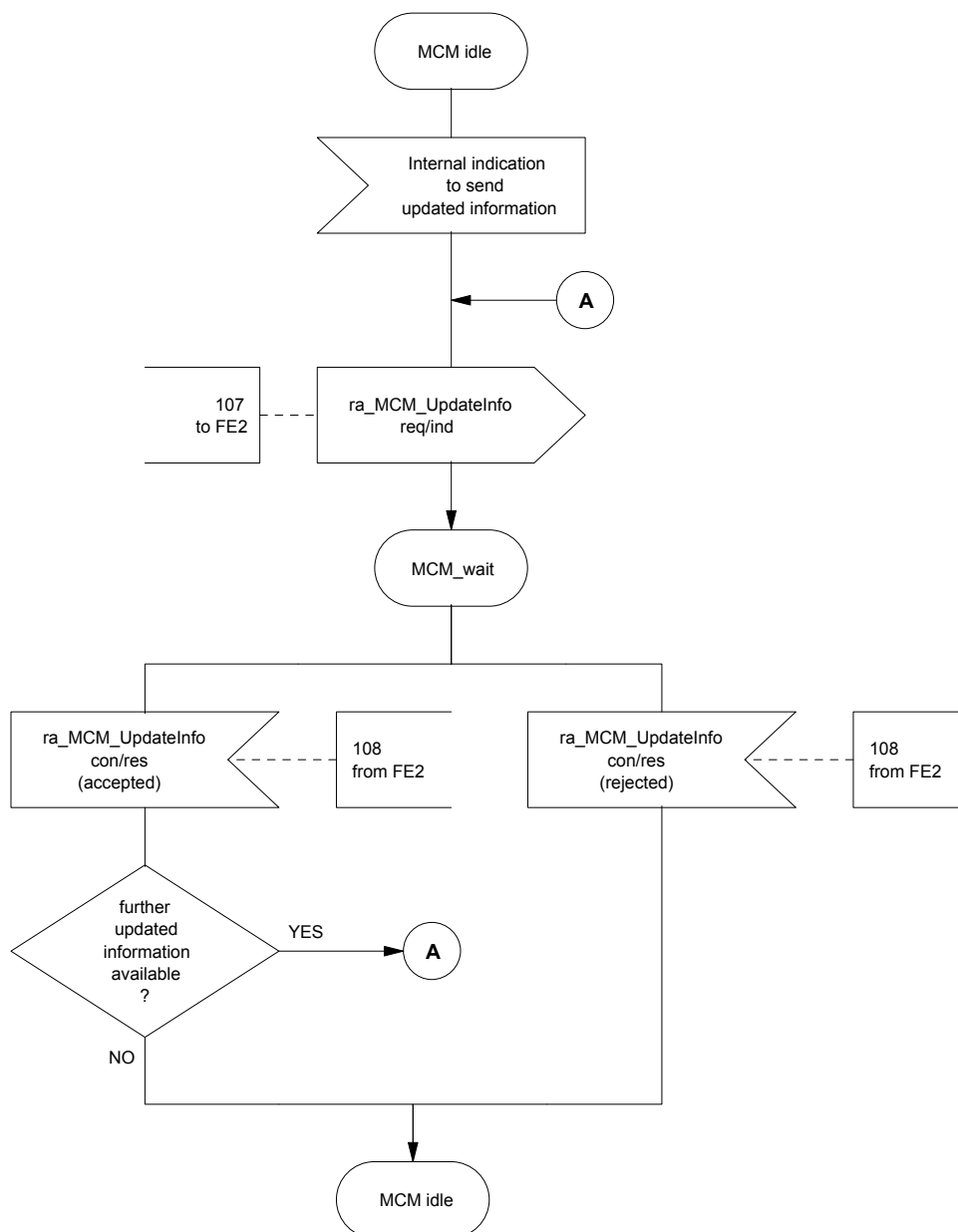


Figure 12e — SDL for MCM Update Information for FE1, Message Centre's control entity

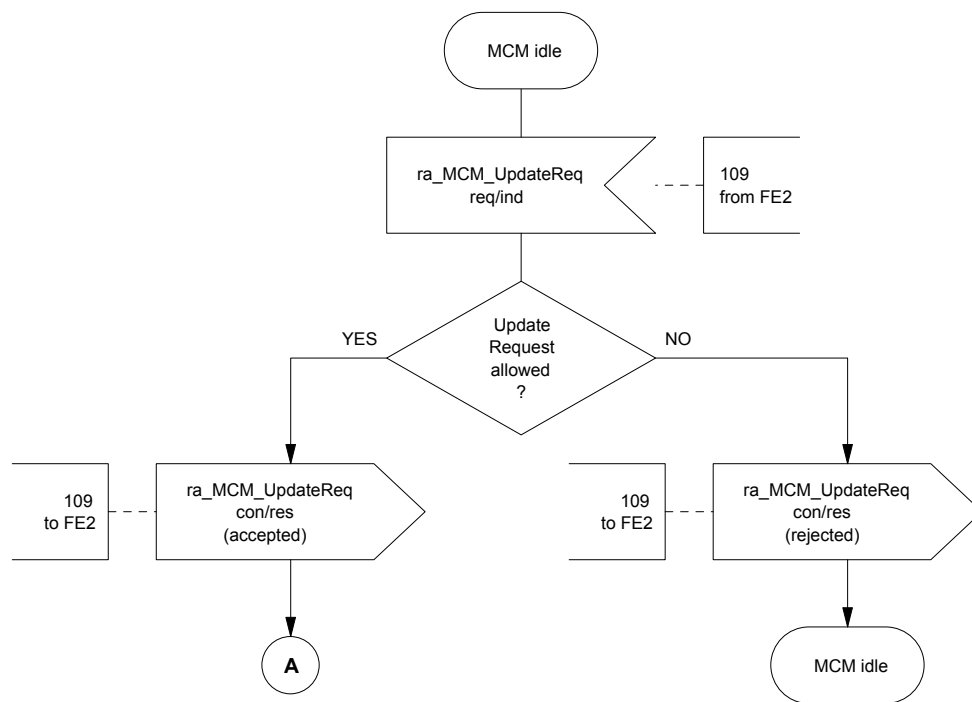


Figure 12f — SDL for MCM Update Request for FE1, Message Centre's control entity

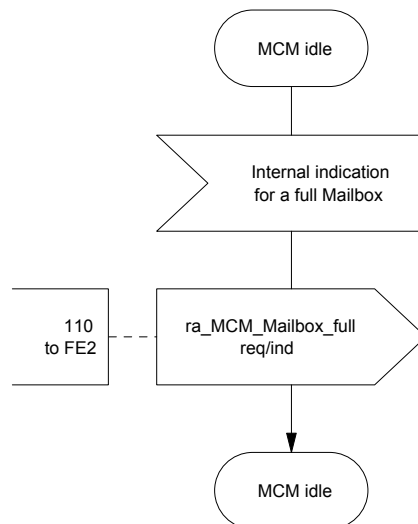


Figure 12g — SDL for MCM Mailbox-full Indication for FE1, Message Centre's control entity

8.4.2 Behaviour of FE2

Figure 13 shows the normal behaviour of FE2. Output signals to the left and input signals from the left represent primitives to and from the FE1. Output signals to the right and input signals from the right represent information flows from and to FE3.

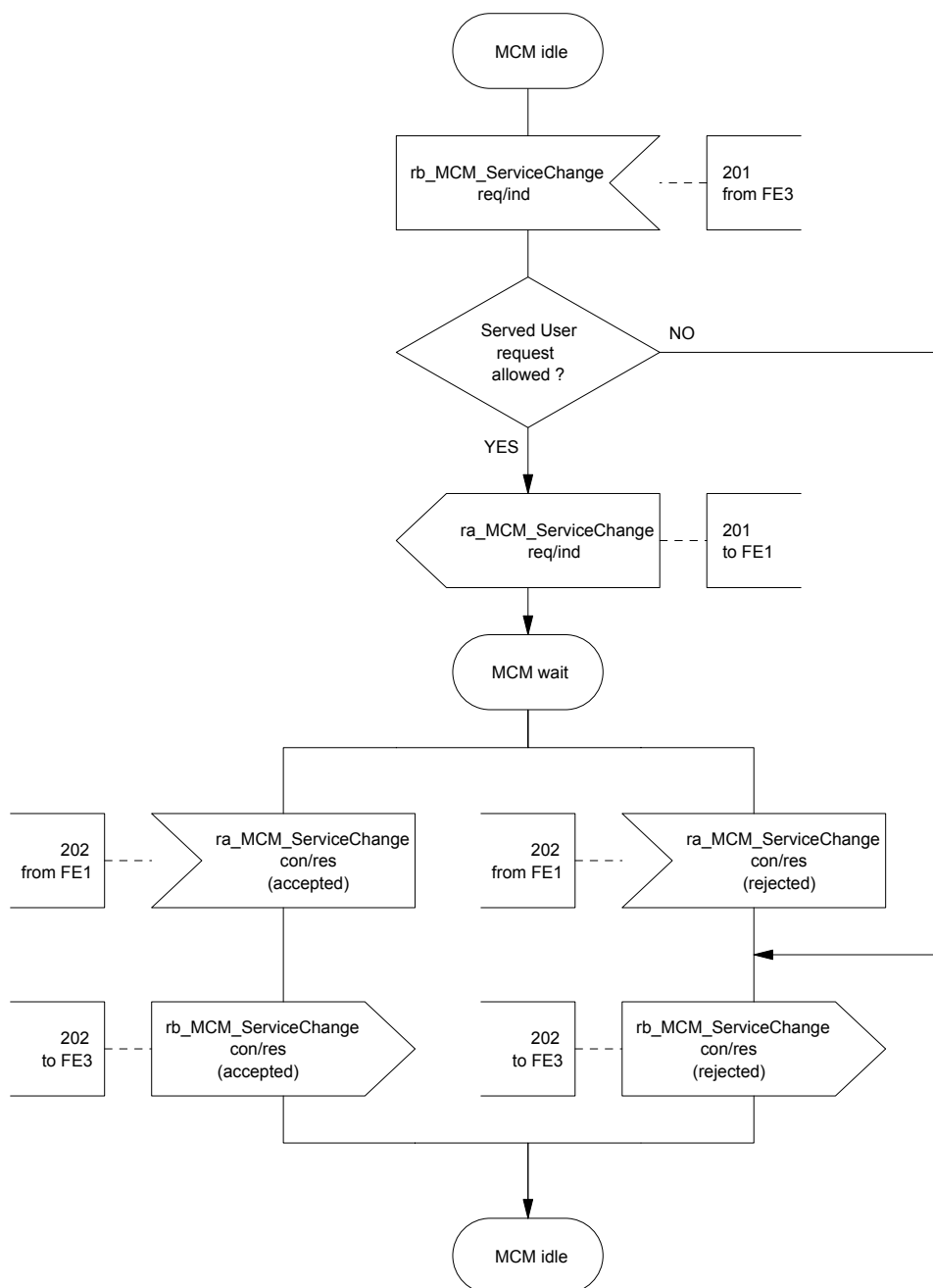


Figure 13a — SDL for MCM Service Change Procedures for FE2, Served User's control entity

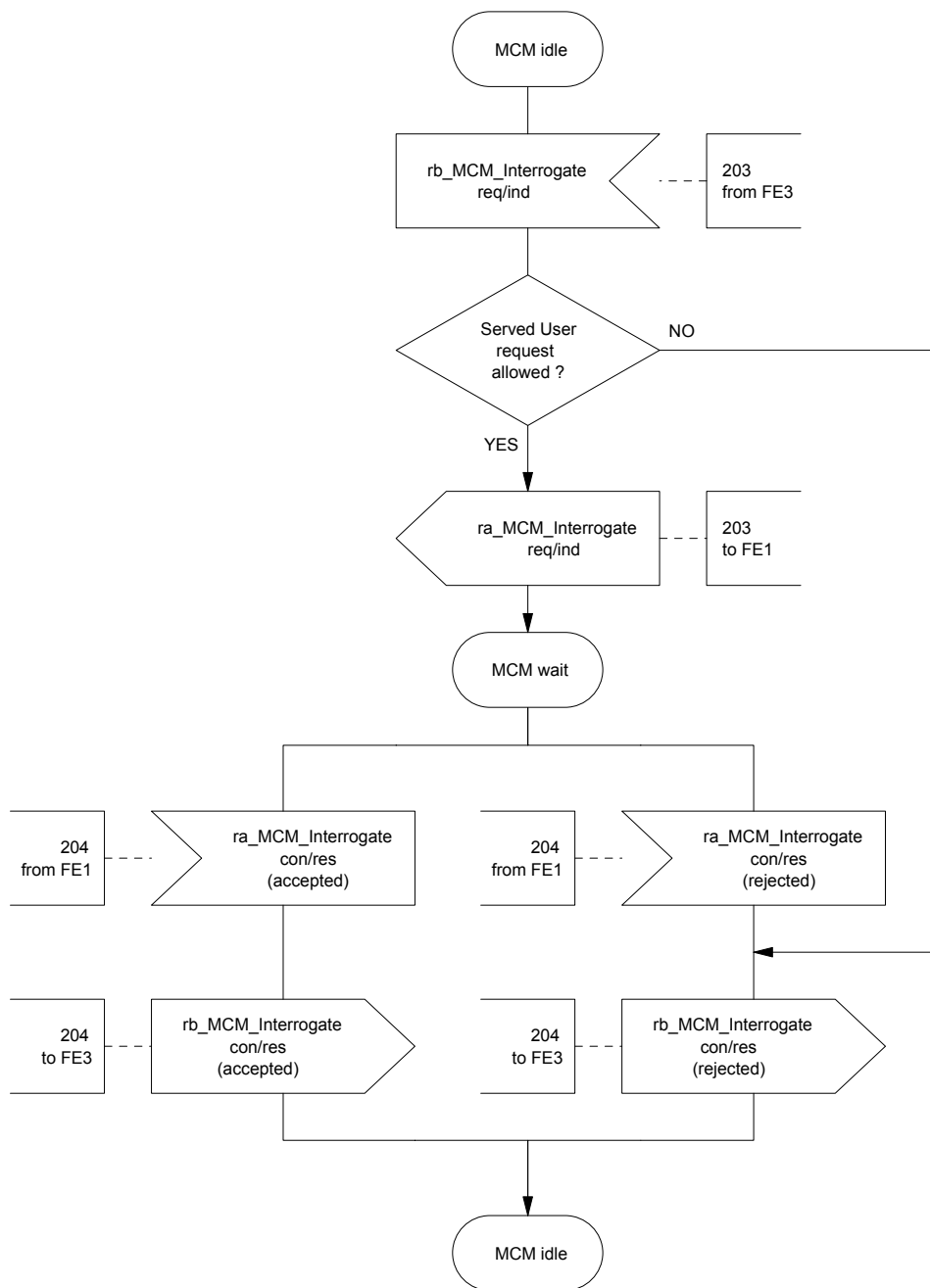


Figure 13b — SDL for MCM Interrogation Request for FE2, Served User's control entity

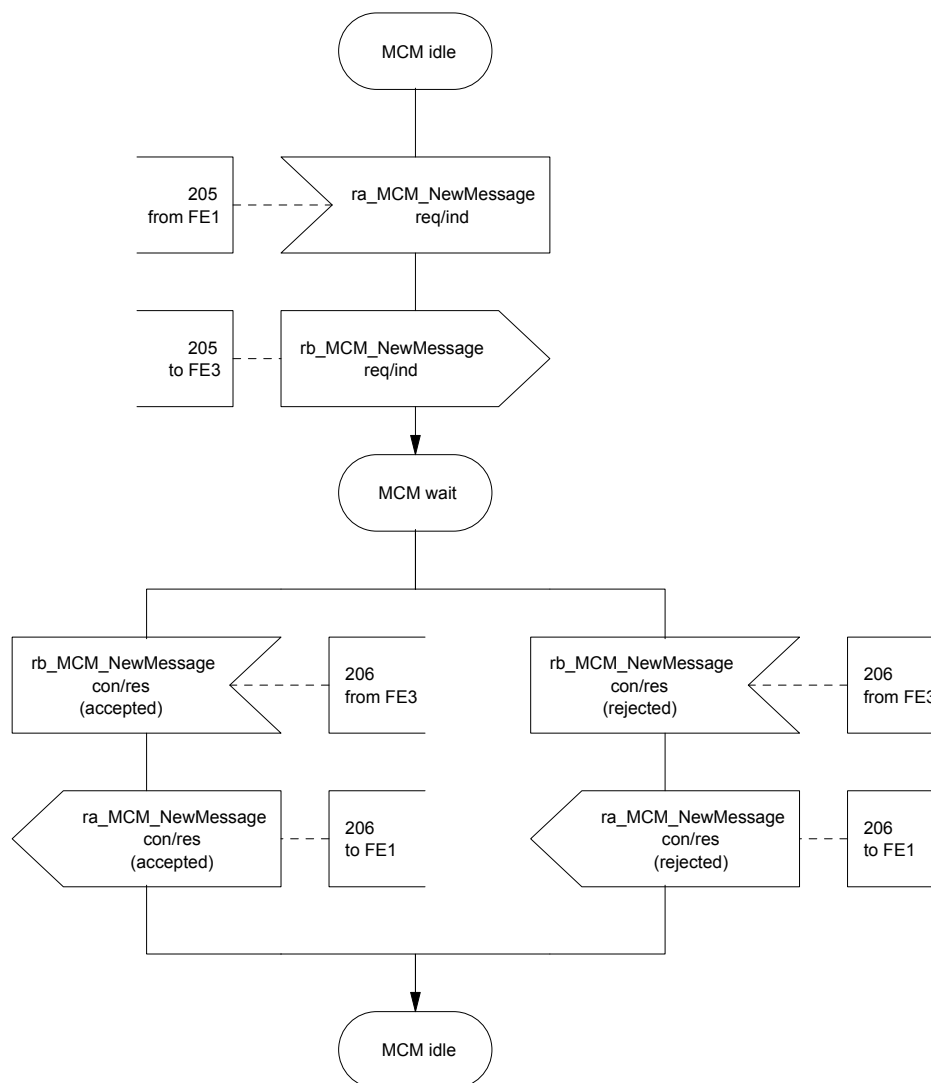


Figure 13c — SDL for MCM NewMessage Indication for FE2, Served User's control entity

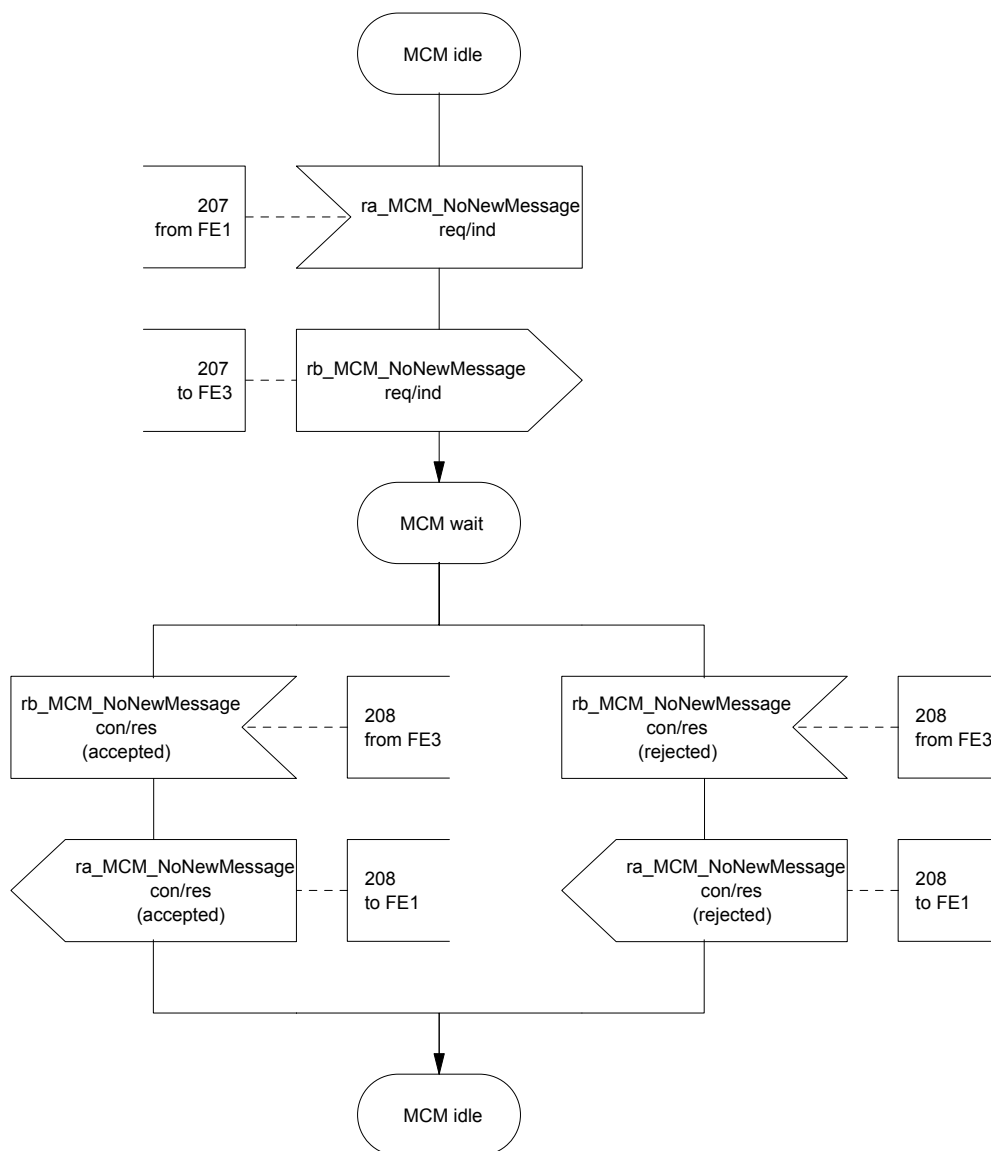


Figure 13d — SDL for MCM NoNewMessage Indication for FE2, Served User's control entity

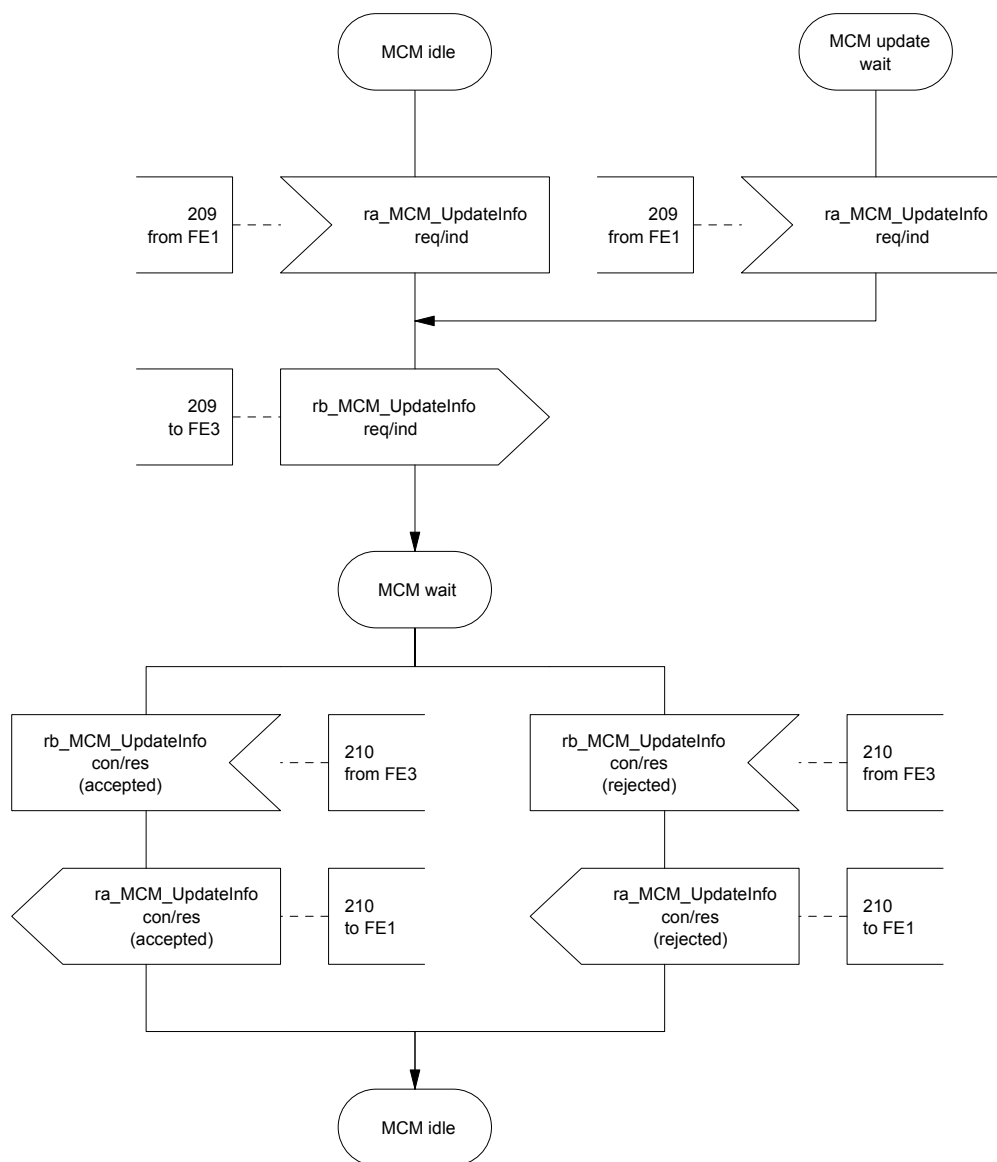


Figure 13e — SDL for MCM Update Information for FE2, Served User's control entity

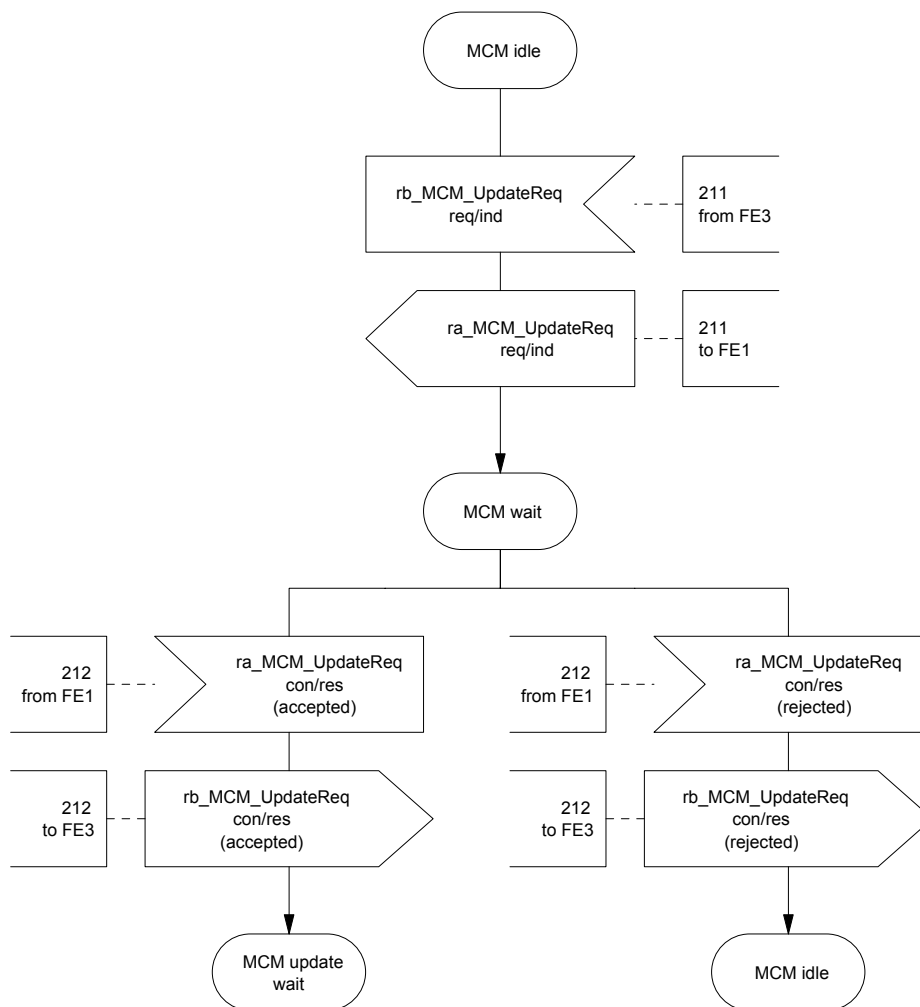


Figure 13f — SDL for MCM Update Request for FE2, Served User's control entity

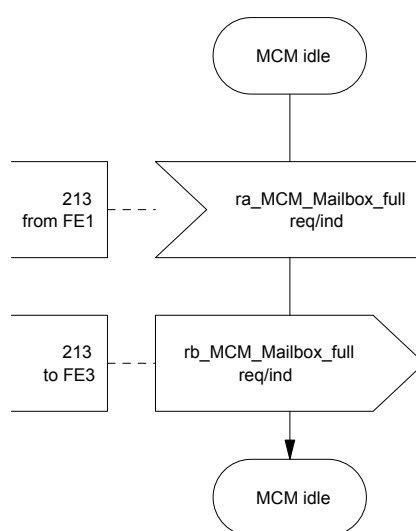


Figure 13g — SDL for MCM Mailbox-full Indication for FE2, Served User's control entity

8.4.3 Behaviour of FE3

Figure 14 shows the normal behaviour of FE3. Output signals to the left and input signals from the left represent information flows to and from the FE2. Input signals from the right represent Served User actions.

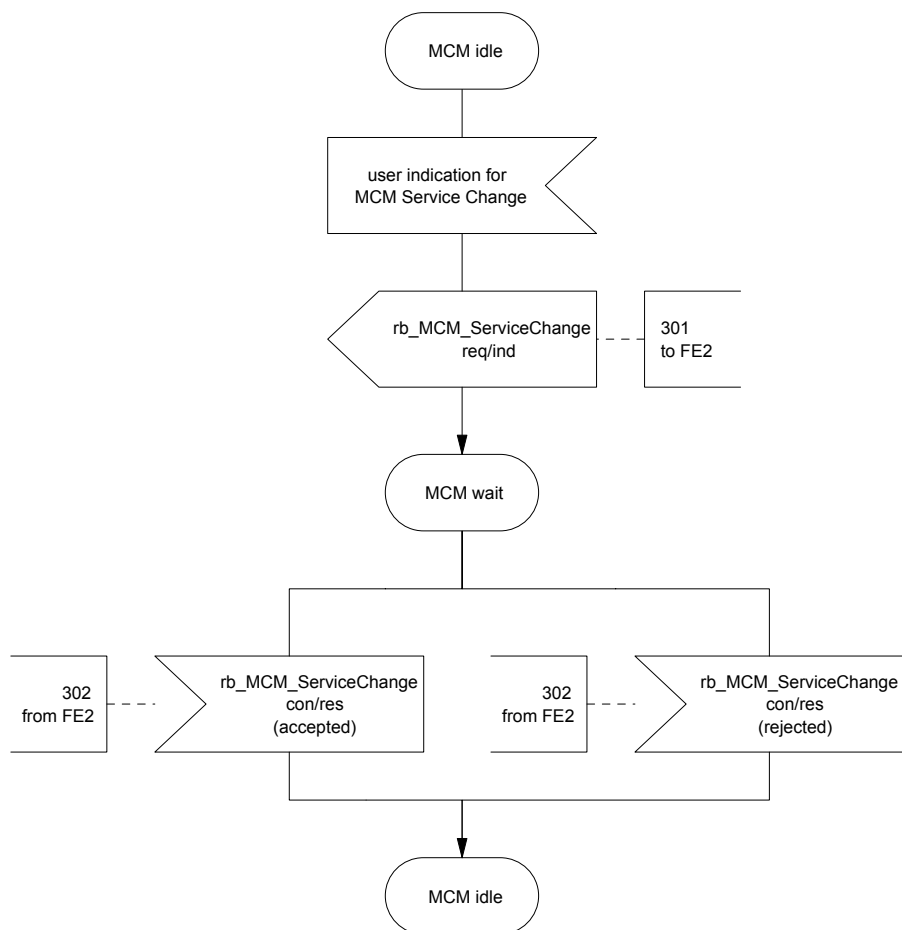


Figure 14a — SDL for MCM Service Change Procedures for FE3, Served User Agent

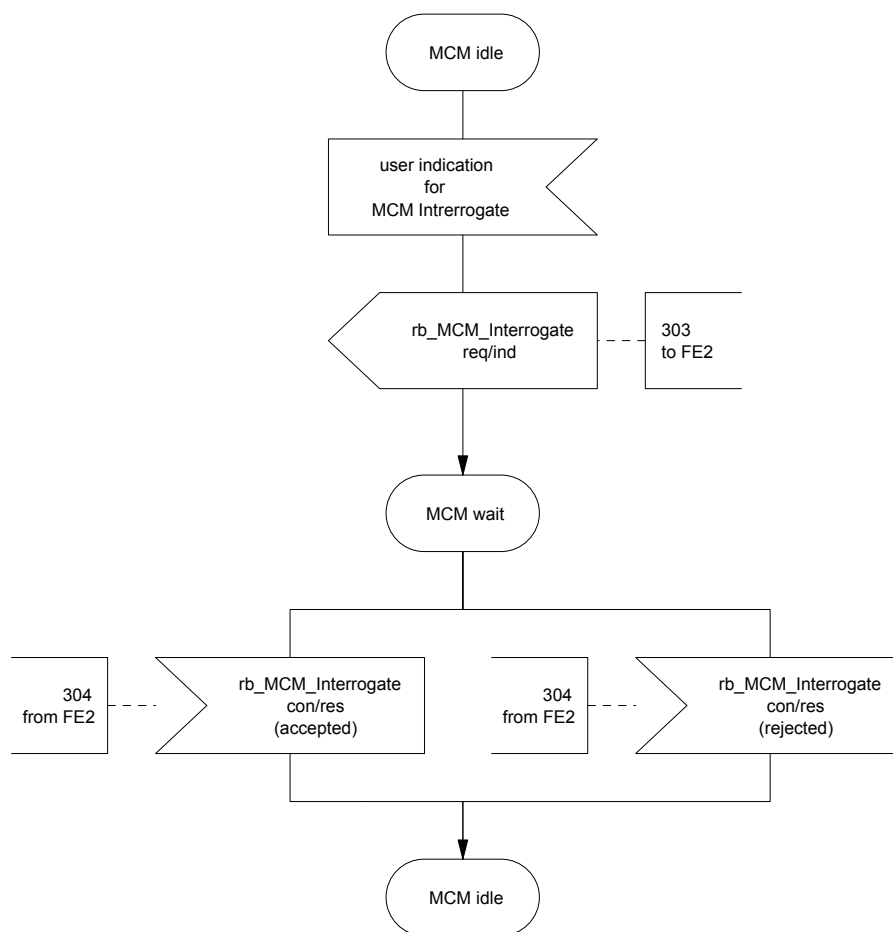


Figure 14b — SDL for MCM Interrogation Request for FE3, Served User Agent

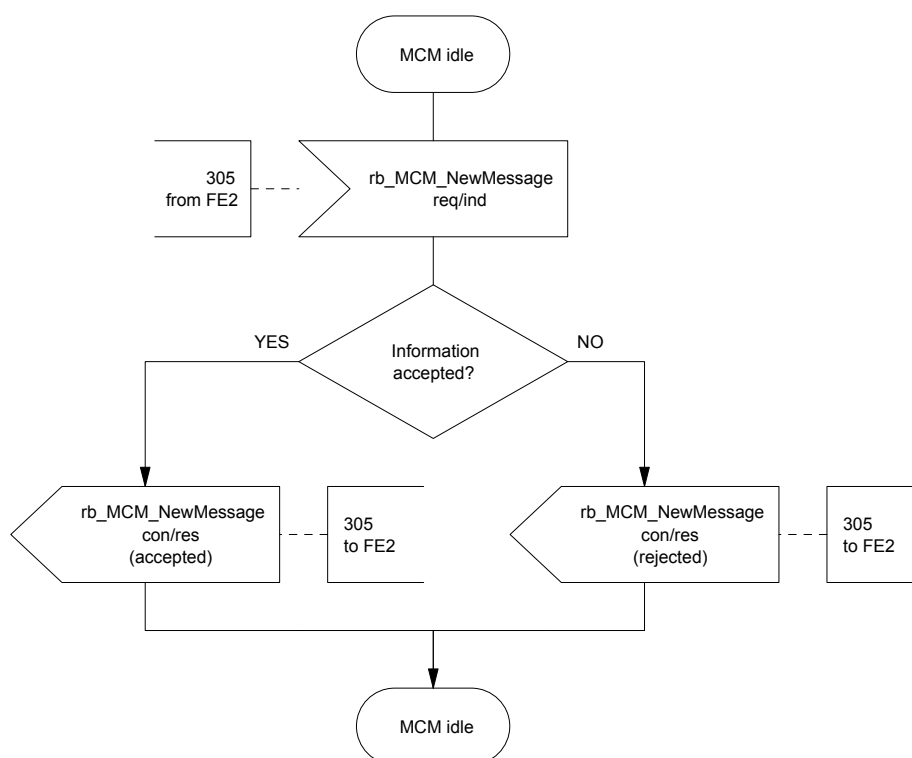


Figure 14c — SDL for MCM NewMessage Indication for FE3, Served User Agent

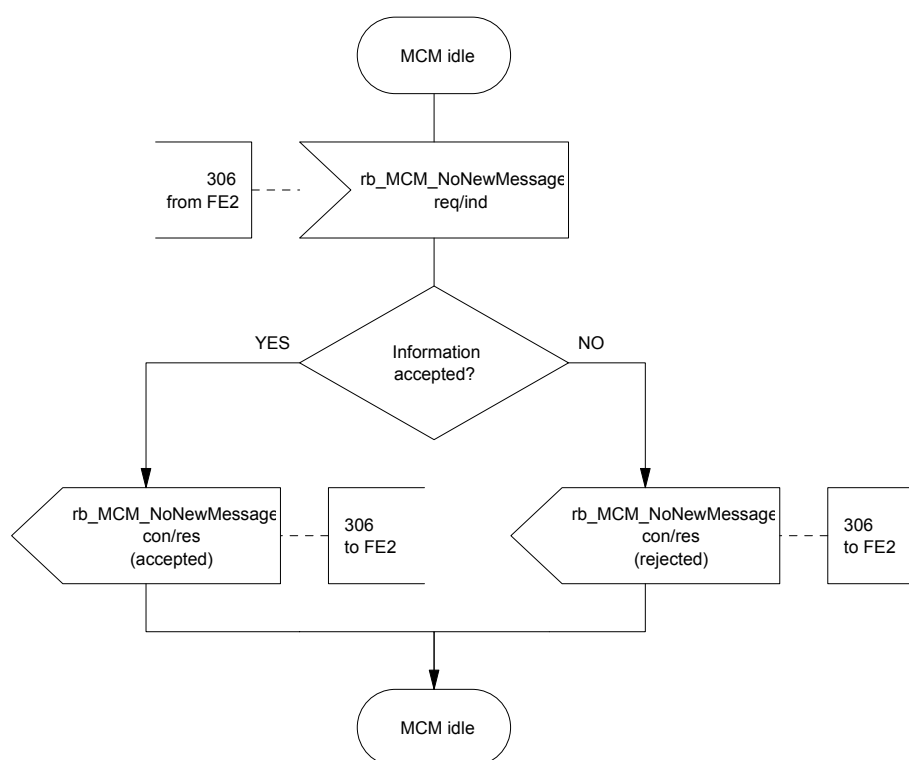


Figure 14d — SDL for MCM NoNewMessage Indication for FE3, Served User Agent

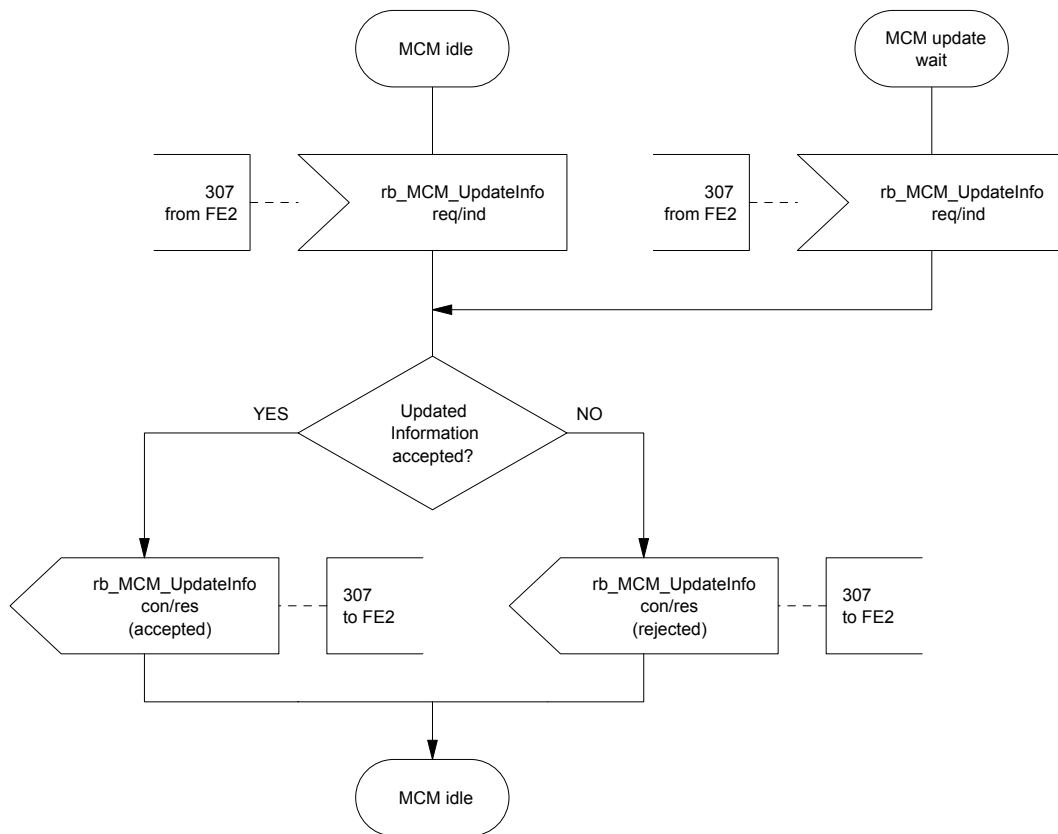


Figure 14e — SDL for MCM Update Information for FE3, Served User Agent

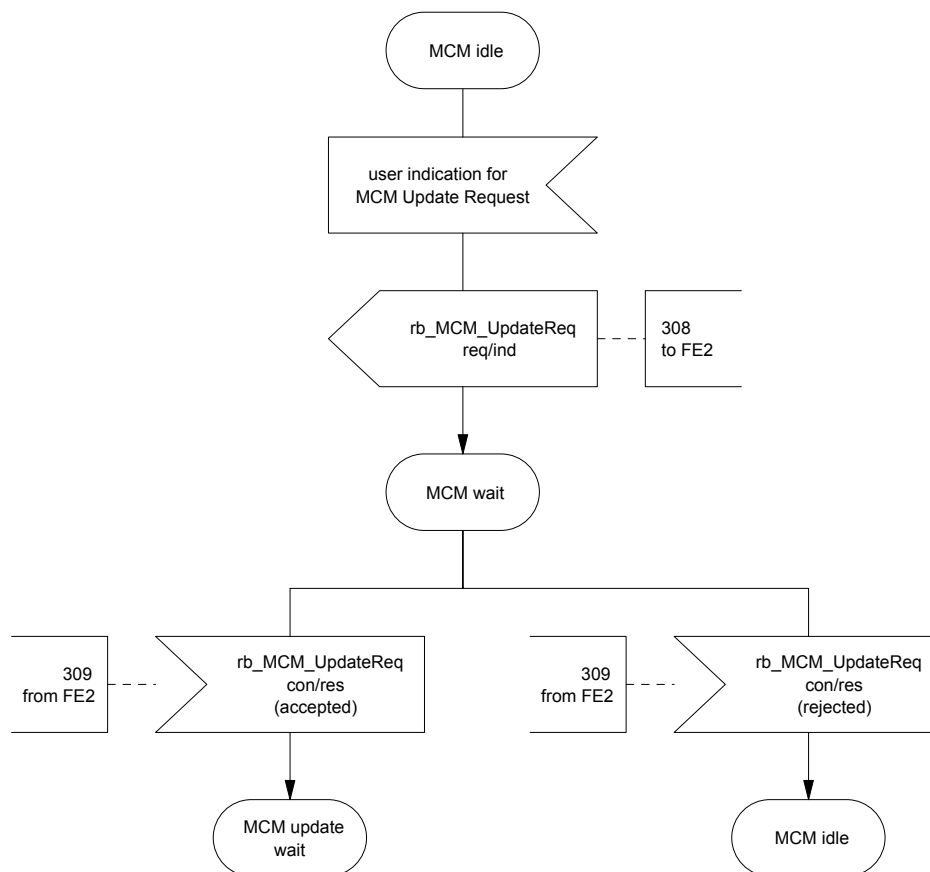


Figure 14f — SDL for MCM Update Request for FE3, Served User Agent

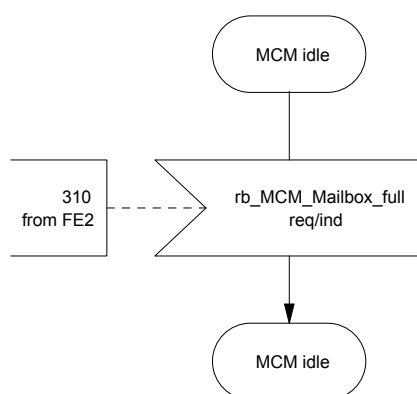


Figure 14g — SDL for MCM Mailbox-full Indication for FE3, Served User Agent

8.5 Allocation of Functional Entities to physical equipment

The allocation of FEs to physical locations shall apply as shown in Table 8.

Table 8 — Scenarios for the allocation of FEs to physical equipment for SS-MCM

	FE1	FE2	FE3
Scenario 1	Message Centre PINX	Served User PINX	Terminal

If FE3 is controlled by or resides in FE2 (e.g. stimulus terminal), the information flows between FE2 and FE3 are outside the scope of this International Standard.

8.6 Interworking considerations

The allocation of FEs to physical locations in the case of interworking with other networks that support a compatible service shall apply as shown in Table 9.

Table 9 — Scenarios for the allocation of FEs to physical equipment for SS-MCM in the case of interworking with other networks

	FE1	FE2	FE3
Scenario 2	Message Centre PINX	Other network	Other network
Scenario 3	Other network	Served User PINX	Terminal

9 SS-MID stage 2 specification

9.1 Functional model

9.1.1 Functional model description

The functional model shall comprise the following Functional Entities (FEs):

FE1 Message Centre's control entity;

FE2 Served User's control entity;

FE3 Served User Agent.

The following relationship shall exist between these FEs:

ra between FE1 and FE2;

rb between FE2 and FE3.

Figure 15 shows these FEs and this relationship.

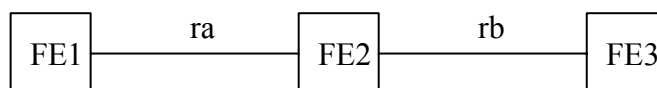


Figure 15 — Functional model for SS-MID

9.1.2 Description of Functional Entities

9.1.2.1 Message Centre's control entity, FE1

This Functional Entity:

- sends Mailbox identification data to FE2;
- receives Mailbox authentication data from FE2.

9.1.2.2 Served User's control entity, FE2

This Functional Entity:

- receives Mailbox identification data from FE1 and sends the Mailbox identification data to FE3;
- receives Mailbox authentication data from FE3 and sends the Mailbox authentication data to FE1.

9.1.2.3 Served User Agent, FE3

This Functional Entity:

- receives Mailbox identification data from FE2.
- sends Mailbox authentication data to FE2.

9.2 Information flows

9.2.1 Definition of information flows

In the tables listing the elements in information flows, the column headed "Request" indicates which of these elements are mandatory (M) and which are optional (O) in a request/indication information flow, and the column headed "Confirm" (confirmed information flows only) indicates which of these elements are mandatory (M) and which are optional (O) in a response/confirmation information flow.

The information flows across rb represent information flows between two functional entities FE2 and FE3. If FE3 is controlled by or resides in FE2 (e.g. stimulus terminal), the information flows across rb are outside the scope of this International Standard.

9.2.1.1 MID_MailboxID

MID_MailboxID is a confirmed information flow across ra from FE1 to FE2 and across rb from FE2 to FE3 used by the MC to indicate a specific Mailbox of the Served User.

Table 10 lists the elements within the MID_MailboxID information flow.

Table 10 — Content of MID_MailboxID

Element	Request	Confirm	NOTE
Served User identity	M		1
Mailbox identity	M		2
Message Centre number	M		3
Served User name	O		4
Result		M	5

NOTE 1 This is the Served User's Party Number (e.g. PISN number).

NOTE 2 This identifies a particular Served User Mailbox when the Served User has different Mailboxes for different Message Types.

NOTE 3 This element identifies the Message Centre (e.g. PISN number).

NOTE 4 This is the name of the Served User.

NOTE 5 This indicates acceptance or the reason for rejection.

9.2.1.2 MID_MailboxAuth

MID_MailboxAuth is a confirmed information flow across rb from FE3 to FE2 and across ra from FE2 to FE1 used by the Served User to authenticate himself/herself at the Mailbox.

Table 11 lists the elements within the MID_MailboxAuth information flow.

Table 11 — Content of MID_MailboxAuth

Element	Request	Confirm	NOTE
Served User identity	M		1
Mailbox identity	O		2
Message Centre number	M		3
Served User name	O		4
Authentication data	M		5
Result		M	6

NOTE 1 This is the Served User's Party Number (e.g. PISN number).

NOTE 2 This identifies a particular Served User Mailbox when the Served User has different Mailboxes (e.g. for different Message Types).

NOTE 3 This element identifies the Message Centre (e.g. PISN number).

NOTE 4 This is the name of the Served User.

NOTE 5 This is the data used from the Served User to authenticate himself/herself at his/her Mailbox (e.g. password).

NOTE 6 This indicates acceptance or the reason for rejection.

9.2.2 Information flow sequences

A stage 3 standard for SS-MID shall provide signalling procedures in support of the information flow sequences specified below. In addition, signalling procedures should be provided to cover other sequences arising from error situations, interactions with Basic Call, interactions with other supplementary services, different topologies, etc.

The following abbreviations are used:

req request;

ind indication;

resp response;

conf confirm.

9.2.2.1 Mailbox identification

Figure 16 shows in generic form the information flow sequence for Mailbox identification.

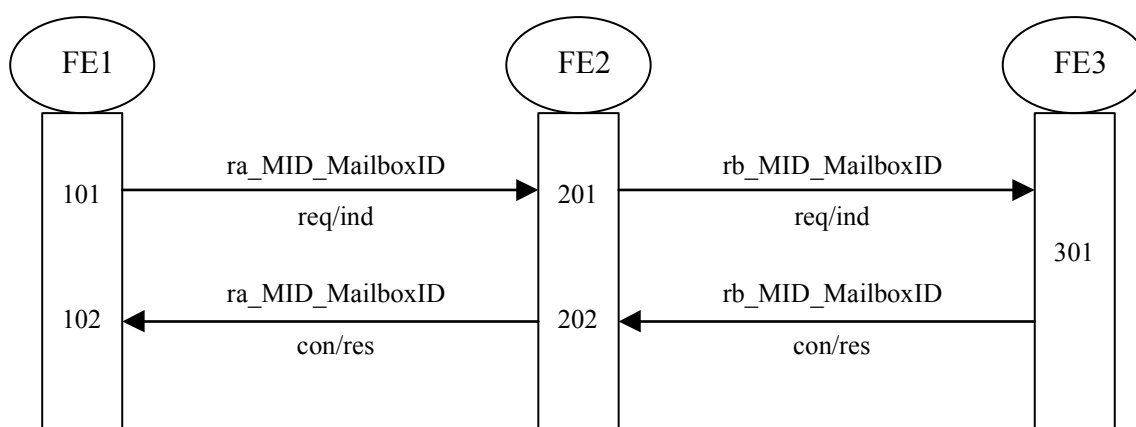


Figure 16 — Information flow sequence for transmission of mailbox identification data

9.2.2.2 Mailbox authentication

Figure 17 shows in generic form the information flow sequence for Mailbox authentication.

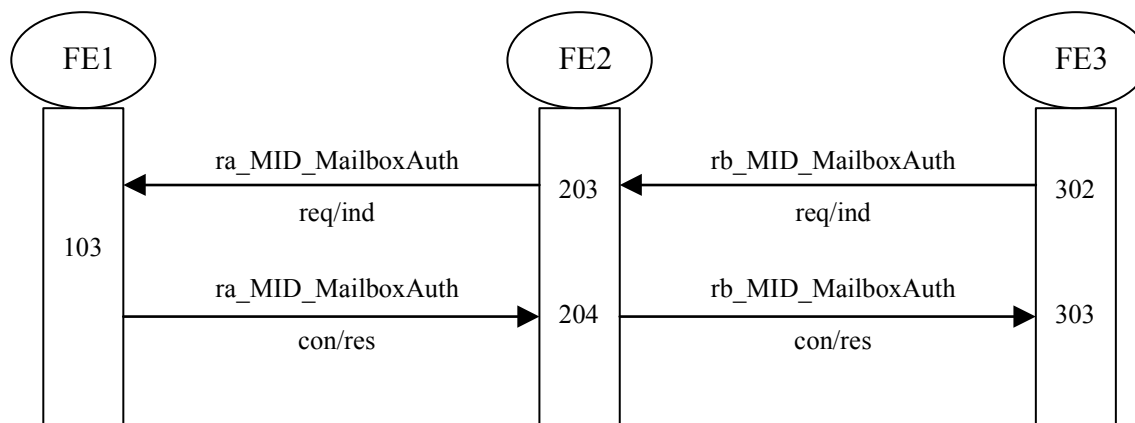


Figure 17 — Information flow sequence for transmission of authentication data

9.3 Functional Entity actions

9.3.1 Functional Entity actions of FE1

- 101 sends ra_MID_MailboxID req/ind with mailbox identification data to FE2;
- 102 receives ra_MID_MailboxID con/res from FE2;
- 103 receives ra_MID_MailboxAuth req/ind with authentication data from FE2 and sends ra_MID_MailboxAuth con/res to FE2.

9.3.2 Functional Entity actions of FE2

- 201 receives ra_MID_MailboxID req/ind from FE1 and sends rb_MID_MailboxID req/ind to FE3;
- 202 sends ra_MID_MailboxID con/res to FE1;
- 203 receives rb_MID_MailboxAuth req/ind from FE3 and sends ra_MID_MailboxAuth req/ind to FE1;
- 204 receives ra_MID_MailboxAuth con/res from FE1 and sends rb_MID_MailboxAuth con/res to FE3.

9.3.3 Functional Entity actions of FE3

- 301 receives rb_MID_MailboxID req/ind with mailbox identification data from FE2;
- 302 sends rb_MID_MailboxAuth req/ind with Served User's authentication data to FE2;
- 303 receives rb_MID_MailboxAuth con/res from FE2.

9.4 Functional Entity behaviour

The FE behaviours shown below are intended to illustrate typical FE behaviour in terms of information flows sent and received. The behaviour of each FE is shown using the Specification and Description Language (SDL) defined in IUT-T Rec. Z.100 (1999).

9.4.1 Behaviour of FE1

Figure 18 shows the normal behaviour of FE1. Output signals to the right and input signals from the right represent information flows from and to FE2. Input signals from the left represent indications from the Message Centre.

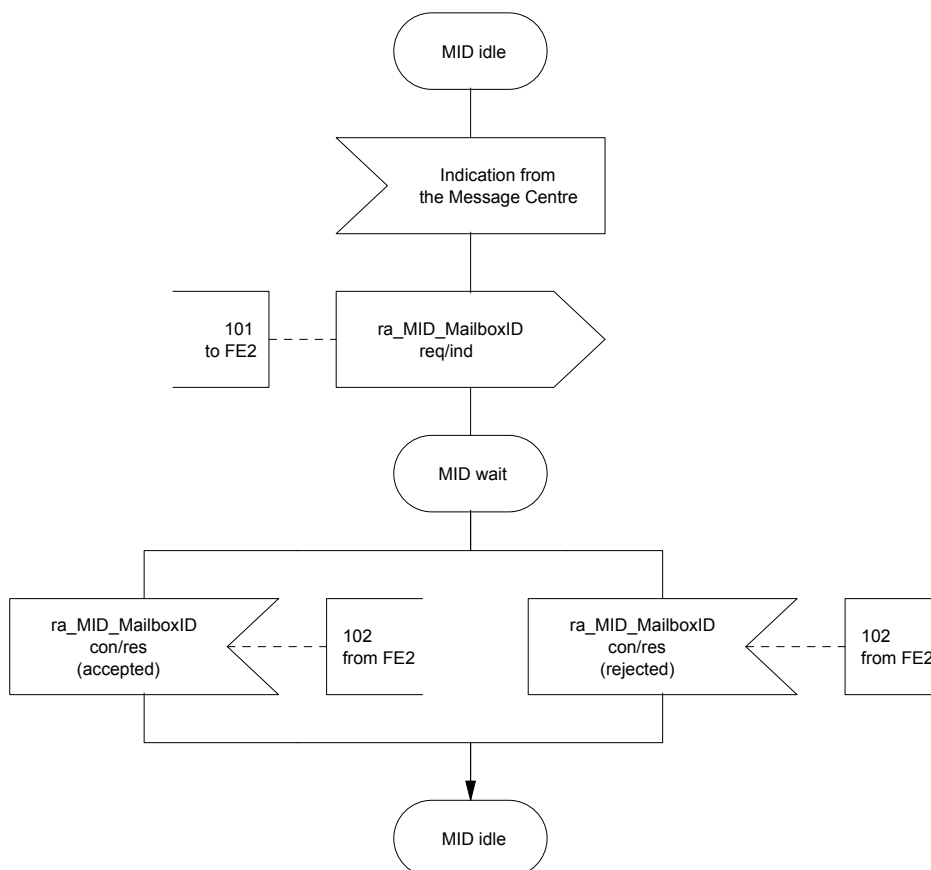


Figure 18a — SDL for transmission of identification data for Functional Entity FE1, Message Centre's control entity

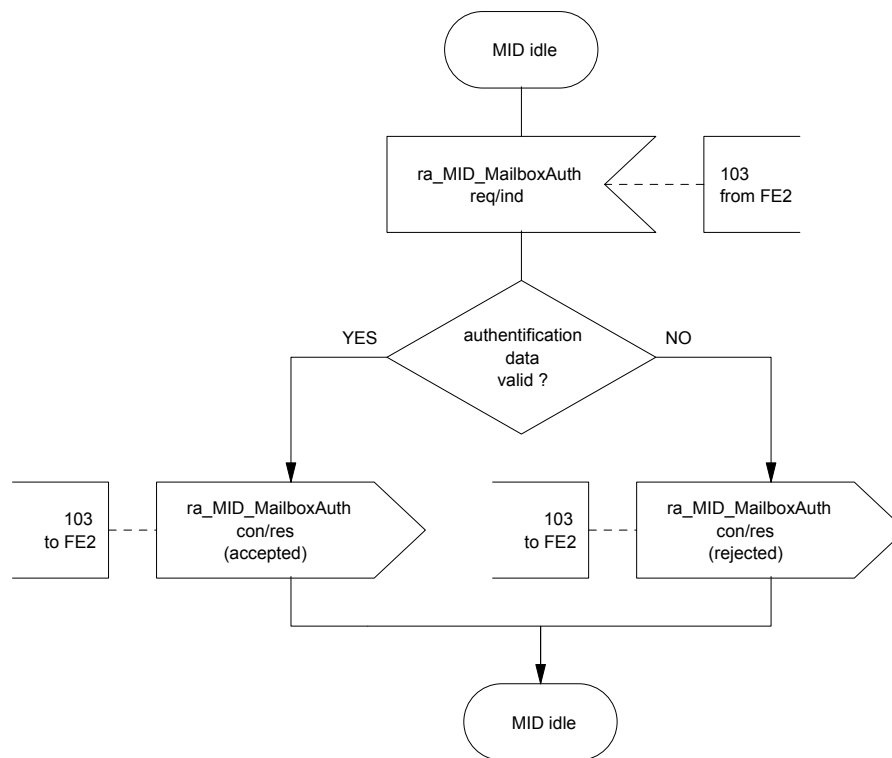


Figure 18b — SDL for receiving authentication data for Functional Entity FE1, Message Centre's control entity

9.4.2 Behaviour of FE2

Figure 19 shows the normal behaviour of FE2. Output signals to the left and input signals from the left represent primitives to and from the FE1. Output signals to the right and input signals from the right represent information flows to and from FE3.

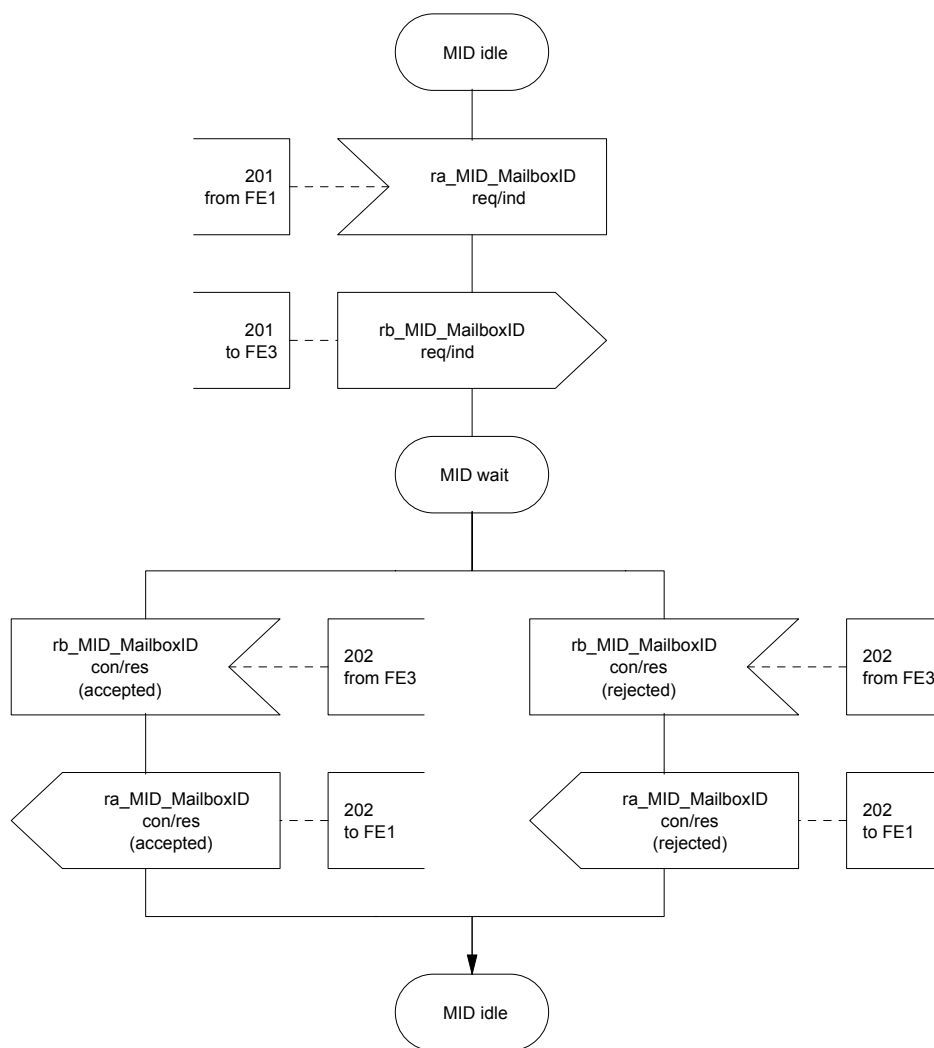


Figure 19a — SDL for transmission of identification data for Functional Entity FE2, Served User's control entity

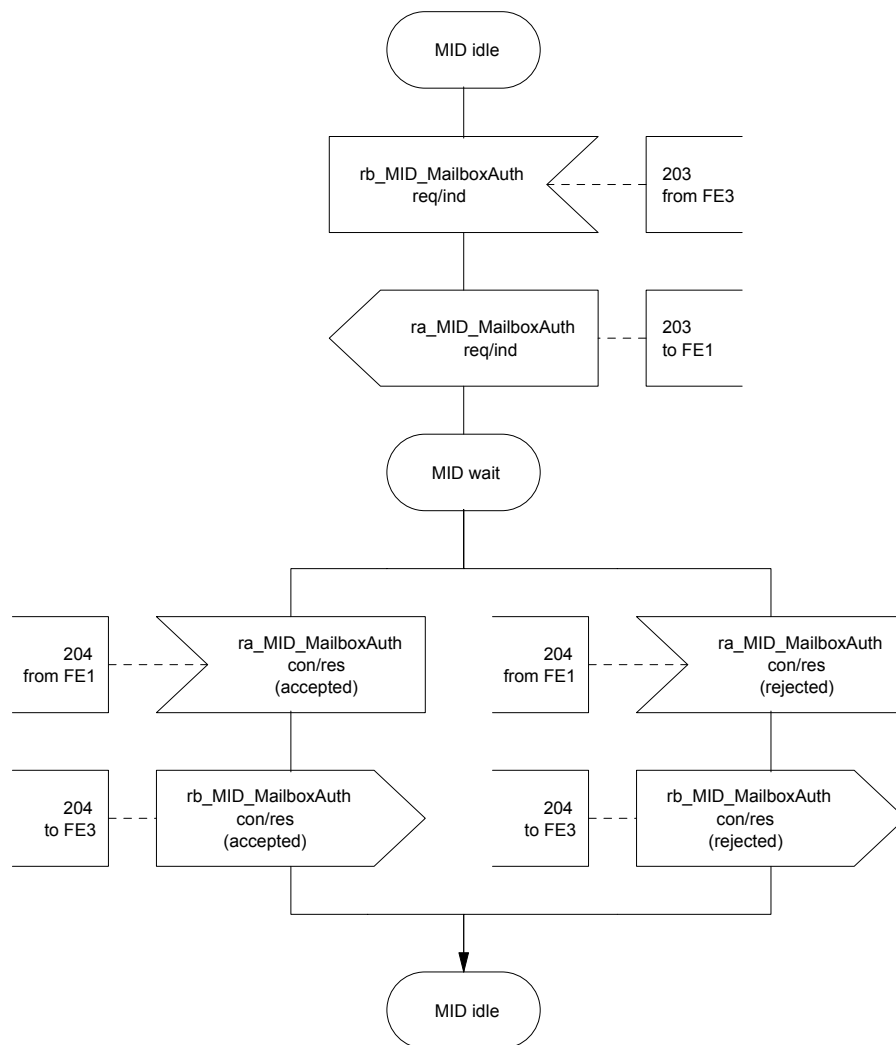


Figure 19b — SDL for transmission of authentication data for Functional Entity FE2, Served User's control entity

9.4.3 Behaviour of FE3

Figure 20 shows the normal behaviour of FE3. Output signals to the right and input signals from the right represent information flows to and from FE2. Input signals from the left represent Served User actions.

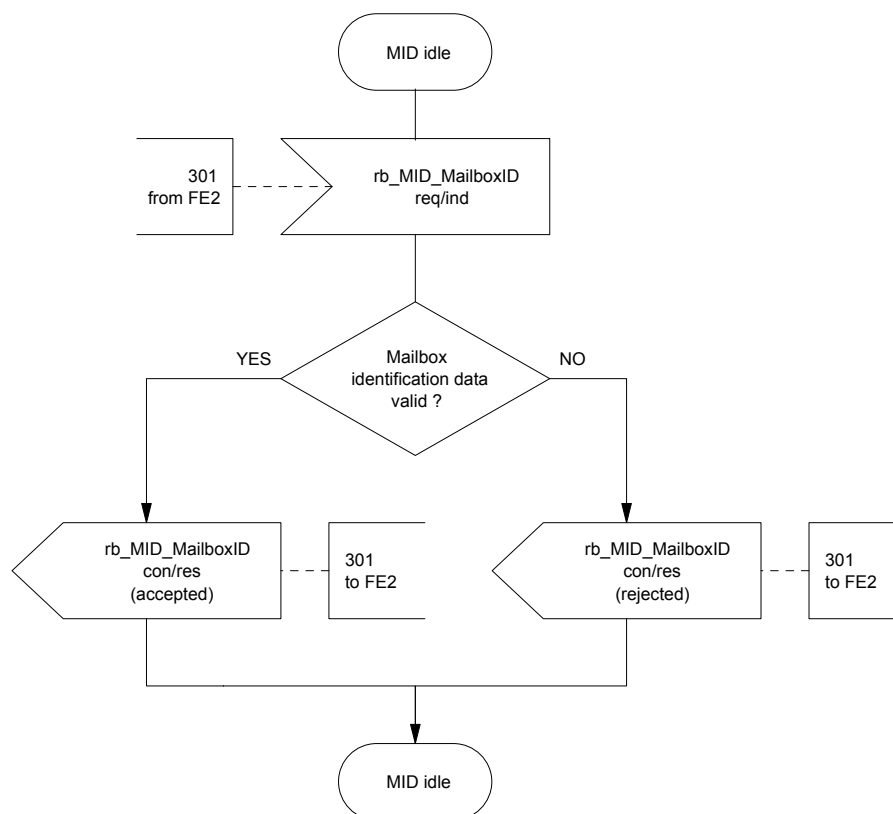


Figure 20a — SDL for receiving identification data for Functional Entity FE3, Served User Agent

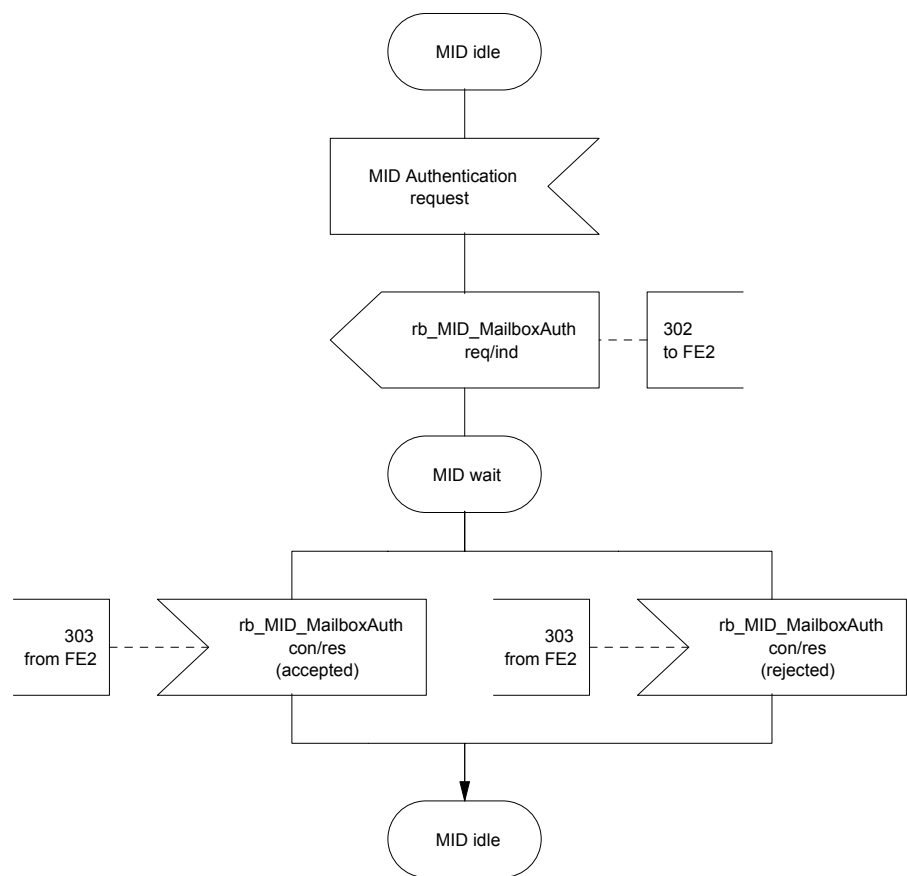


Figure 20b — SDL for transmission of authentication data for Functional Entity FE3, Served User Agent

9.5 Allocation of Functional Entities to physical equipment

The allocation of FEs to physical locations shall apply as shown in Table 12.

Table 12 — Scenarios for the allocation of FEs to physical equipment for SS-MID

	FE1	FE2	FE3
Scenario 1	Message Centre PINX	Served User PINX	Terminal

If FE3 is controlled by or resides in FE2 (e.g. stimulus terminal), the information flows between FE2 and FE3 are outside the scope of this International Standard.

9.6 Interworking considerations

The allocation of FEs to physical locations in the case of interworking with other networks that support a compatible service shall apply as shown in Table 13.

Table 13 — Scenarios for the allocation of FEs to physical equipment for SS-MID in the case of interworking with other networks

	FE1	FE2	FE3
Scenario 2	Message Centre PINX	Other network	Other network
Scenario 3	Other network	Served User PINX	Terminal

